

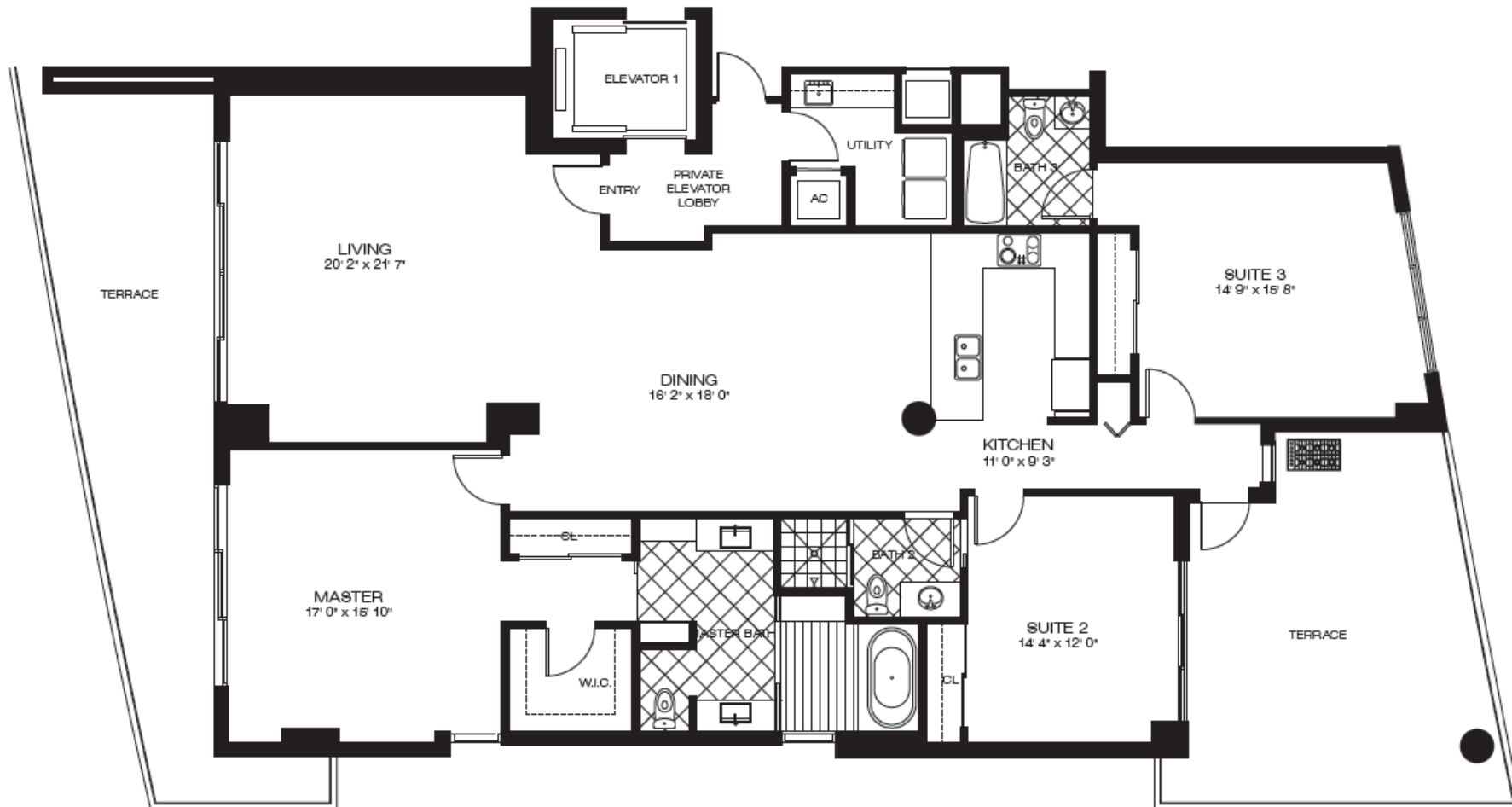


RIVA

FLOOR PLANS



JUANMIAMI.COM
FLORIDA REAL ESTATE



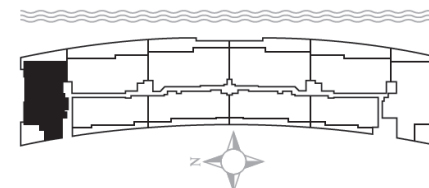
RESIDENCE 01

3 Bedrooms 3 Baths

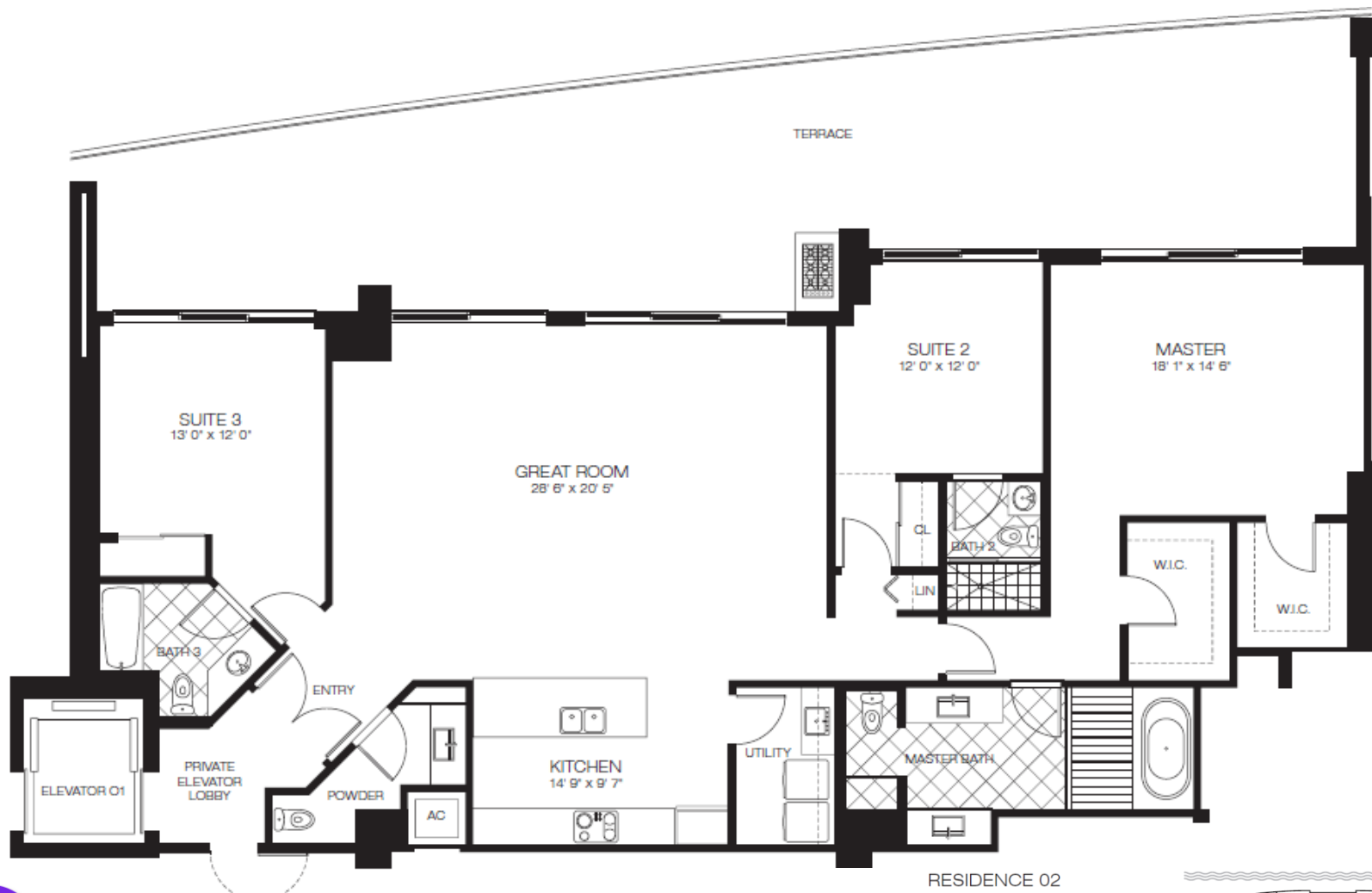
A.C. Living Space 2,365 SF

Terrace 712 SF

Total Living Space 3,077 SF

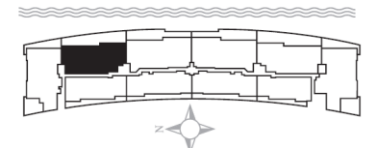


RIVA



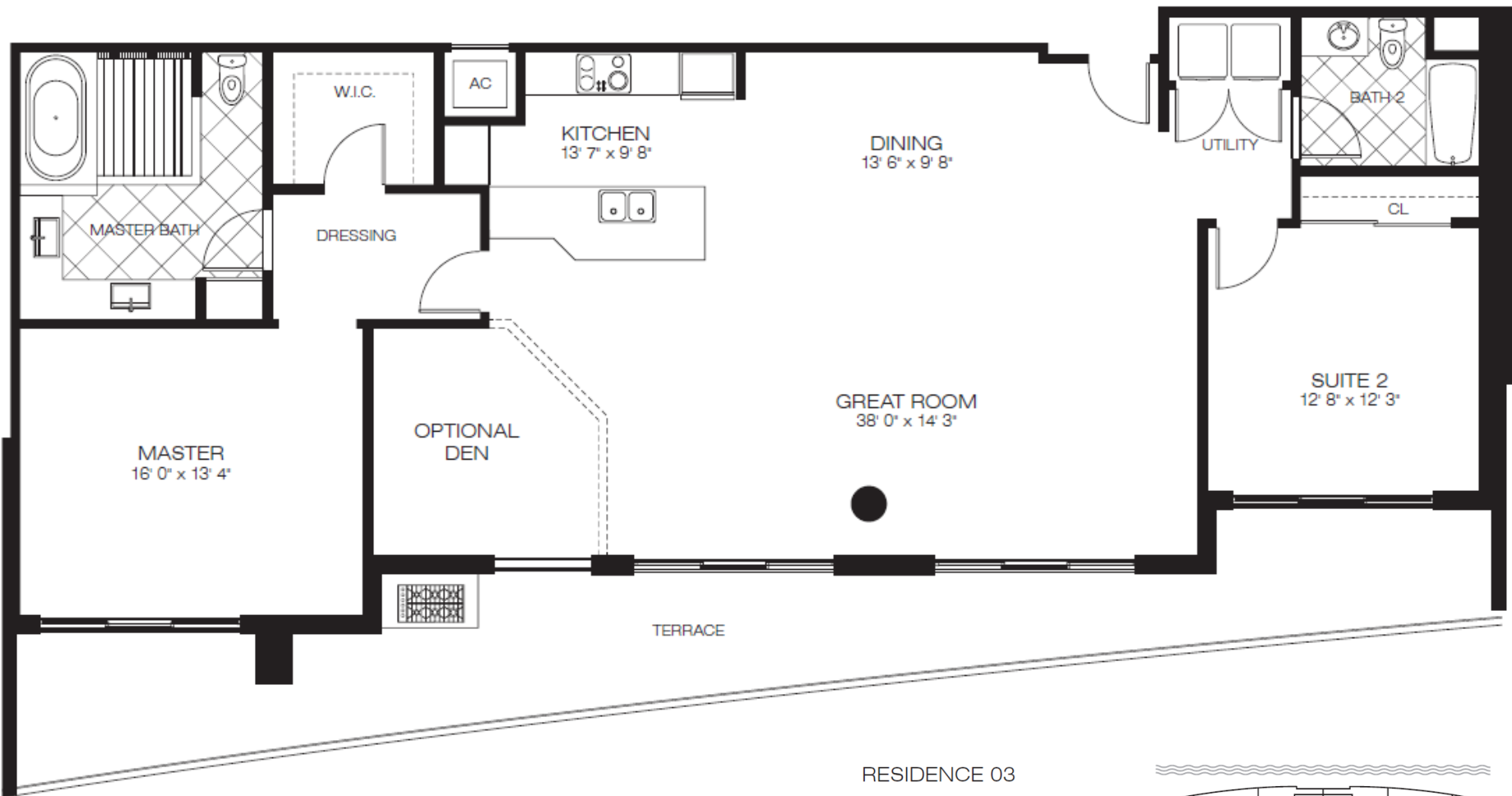
RESIDENCE 02

3 Bedrooms 3½ Baths
 A.C. Living Space 2,224 SF
 Terrace 907 SF
 Total Living Space 3,131 SF



RIVA

Unit Dimensions and Square Footages. There are two generally accepted methods of measuring the boundaries of units in residential condominiums. The first method is based on the description of the boundaries of the Unit, as set forth in the Declaration of Condominium, and generally only includes the airspace with the Unit (the "Engineering Method"). The other method, which is customarily used in sales brochures, generally measures the Unit to the outside finished surface of exterior walls and to the centerline of interior demising walls, includes portions of the adjacent Common Elements of the Condominium (the "Architectural Method"). The estimated square footage of the Unit, as determined under the Architectural Method, will be greater than the estimated square footage as determined under the Engineering Method. The Architectural Method is generally used in sales materials and may be provided to allow a prospective buyer to compare the Unit with units in other condominium projects that utilize this method of measurement.



RIVA

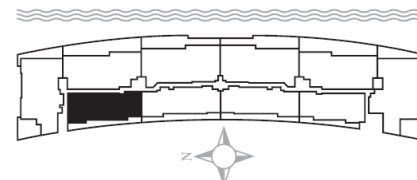
RESIDENCE 03

2 Bedrooms 2 Baths

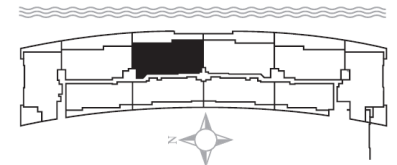
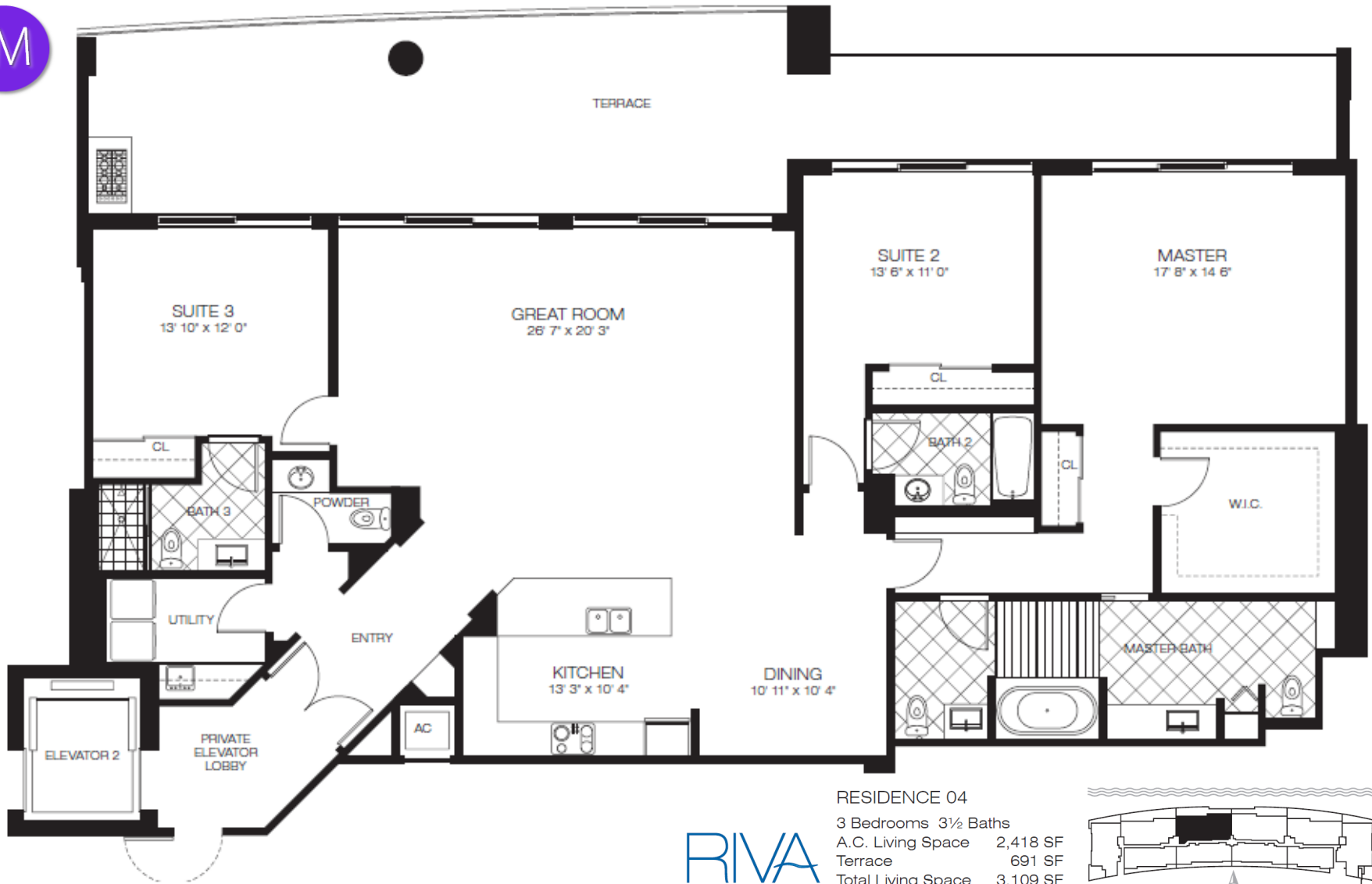
A.C. Living Space 1,738 SF

Terrace 400 SF

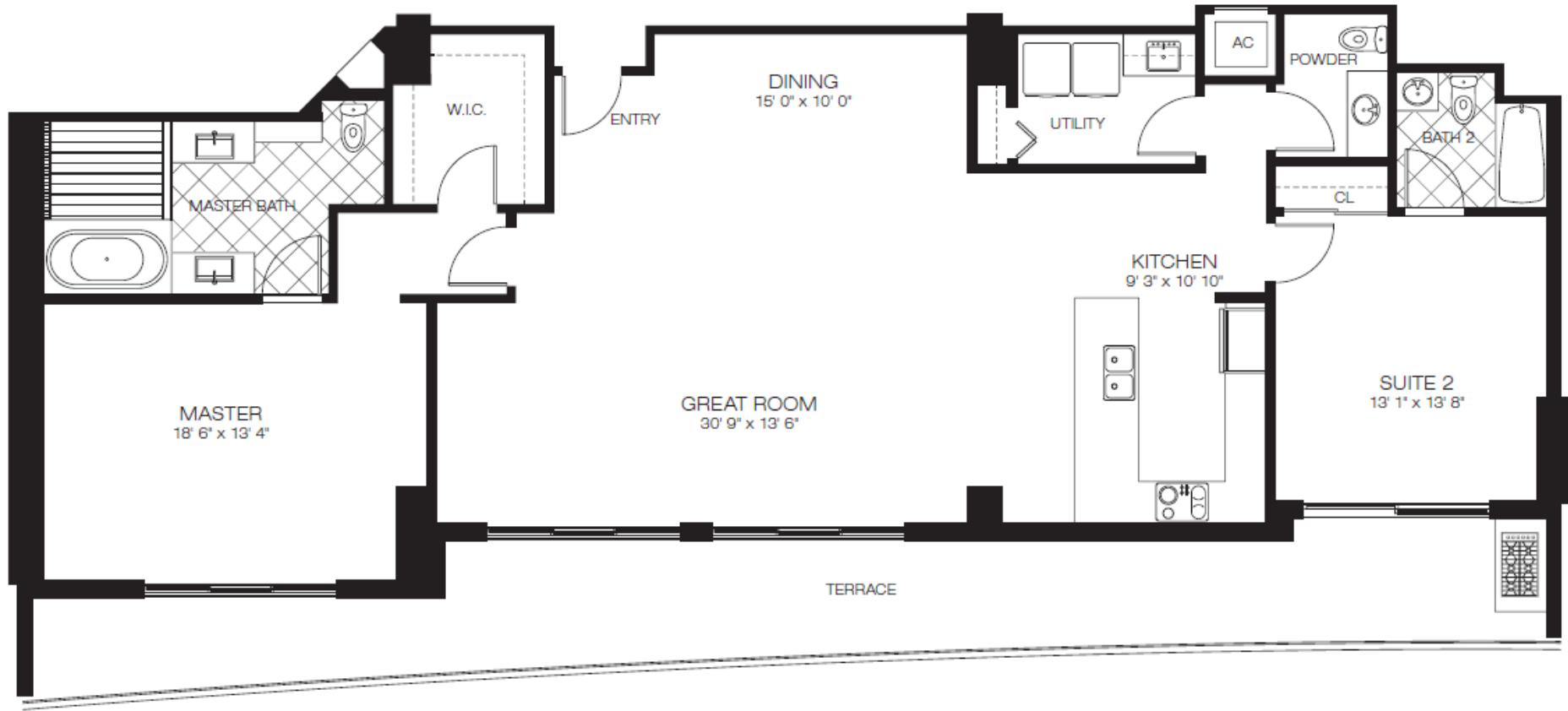
Total Living Space 2,138 SF



Unit Dimensions and Square Footages. There are two generally accepted methods of measuring the boundaries of units in residential condominiums. The first method is based on the description of the boundaries of the Unit, as set forth in the Declaration of Condominium, and generally only includes the airspace with the Unit (the "Engineering Method"). The other method, which is customarily used in sales brochures, generally measures the Unit to the outside finished surface of exterior walls and to the centerline of interior demising walls, includes portions of the adjacent Common Elements of the Condominium (the "Architectural Method"). The estimated square footage of the Unit, as determined under the Architectural Method, will be greater than the estimated square footage as determined under the Engineering Method. The Architectural Method is generally used in sales materials and may be provided to allow a prospective buyer to compare the Unit with units in other condominium projects that utilize this method of measurement.



Unit Dimensions and Square Footages. There are two generally accepted methods of measuring the boundaries of units in residential condominiums. The first method is based on the description of the boundaries of the Unit, as set forth in the Declaration of Condominium, and generally only includes the airspace with the Unit (the "Engineering Method"). The other method, which is customarily used in sales brochures, generally measures the Unit to the outside finished surface of exterior walls and to the centerline of interior demising walls, includes portions of the adjacent Common Elements of the Condominium (the "Architectural Method"). The estimated square footage of the Unit, as determined under the Architectural Method, will be greater than the estimated square footage as determined under the Engineering Method. The Architectural Method is generally used in sales materials and may be provided to allow a prospective buyer to compare the Unit with units in other condominium projects that utilize this method of measurement.



RIVA

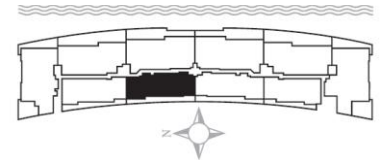
RESIDENCE 05

2 Bedrooms 2½ Baths

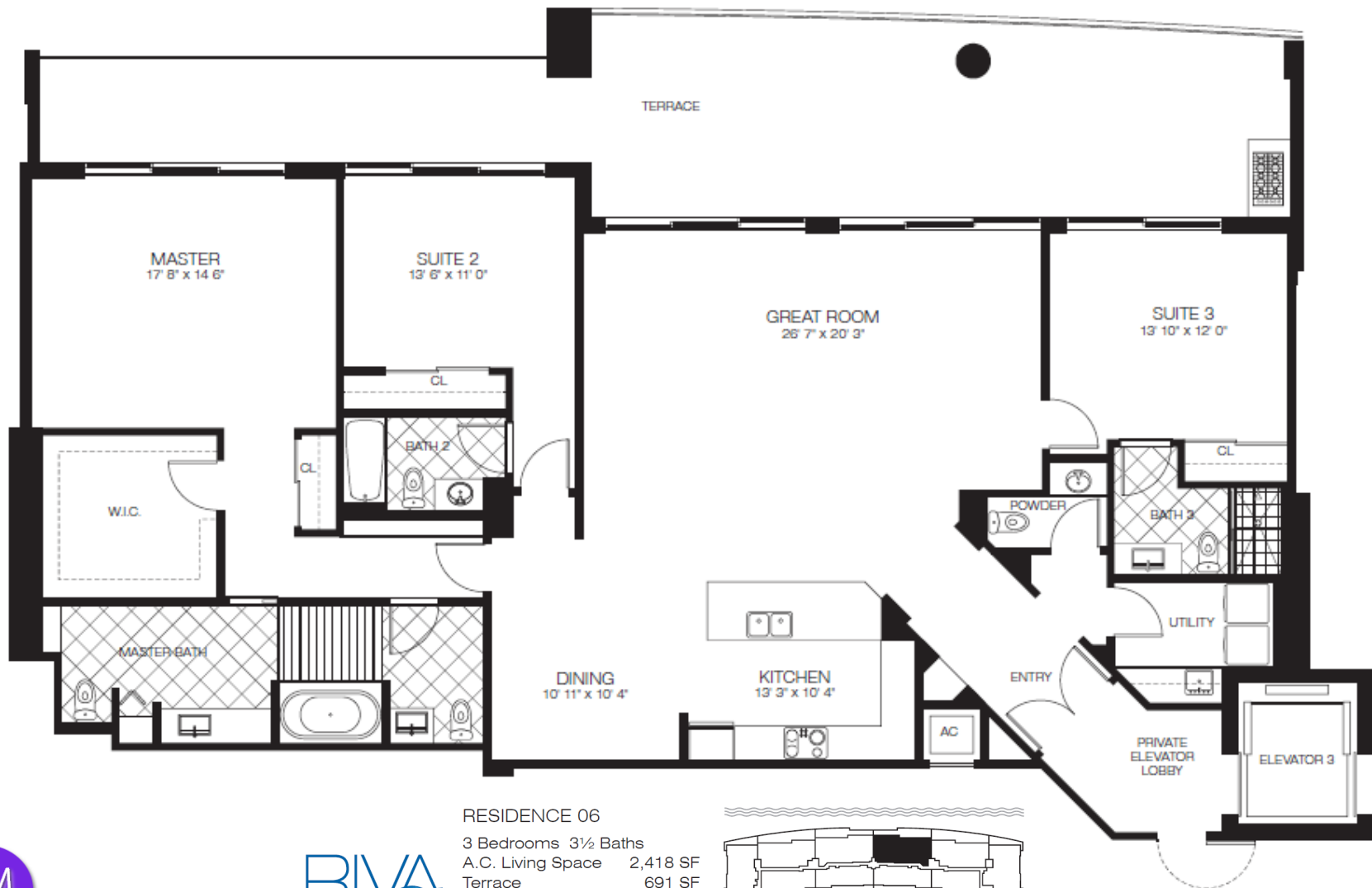
A.C. Living Space 1,780 SF

Terrace 411 SF

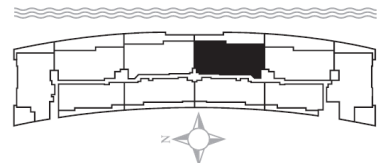
Total Living Space 2,191 SF



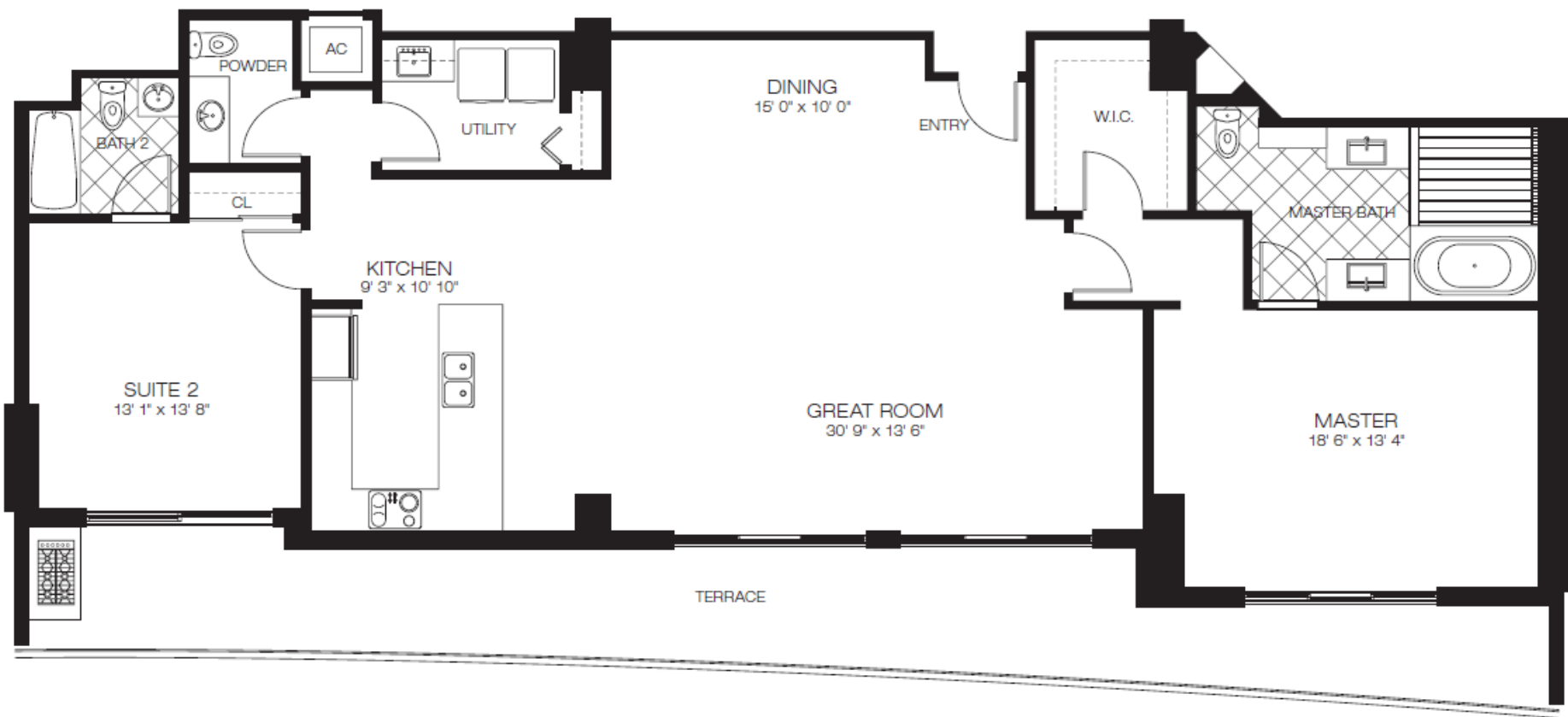
Unit Dimensions and Square Footages. There are two generally accepted methods of measuring the boundaries of units in residential condominiums. The first method is based on the description of the boundaries of the Unit, as set forth in the Declaration of Condominium, and generally only includes the airspace with the Unit (the "Engineering Method"). The other method, which is customarily used in sales brochures, generally measures the Unit to the outside finished surface of exterior walls and to the centerline of interior demising walls, includes portions of the adjacent Common Elements of the Condominium (the "Architectural Method"). The estimated square footage of the Unit, as determined under the Architectural Method, will be greater than the estimated square footage as determined under the Engineering Method. The Architectural Method is generally used in sales materials and may be provided to allow a prospective buyer to compare the Unit with units in other condominium projects that utilize this method of measurement.



RIVA



Unit Dimensions and Square Footages. There are two generally accepted methods of measuring the boundaries of units in residential condominiums. The first method is based on the description of the boundaries of the Unit, as set forth in the Declaration of Condominium, and generally only includes the airspace with the Unit (the "Engineering Method"). The other method, which is customarily used in sales brochures, generally measures the Unit to the outside finished surface of exterior walls and to the centerline of interior demising walls, includes portions of the adjacent Common Elements of the Condominium (the "Architectural Method"). The estimated square footage of the Unit, as determined under the Architectural Method, will be greater than the estimated square footage as determined under the Engineering Method. The Architectural Method is generally used in sales materials and may be provided to allow a prospective buyer to compare the Unit with units in other condominium projects that utilize this method of measurement.



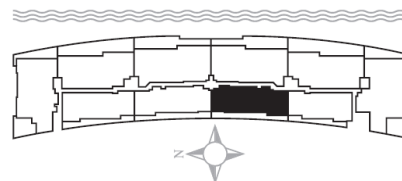
RESIDENCE 07

2 Bedrooms 2½ Baths

A.C. Living Space 1,780 SF

Terrace 411 SF

Total Living Space 2,191 SF



Unit Dimensions and Square Footages. There are two generally accepted methods of measuring the boundaries of units in residential condominiums. The first method is based on the description of the boundaries of the Unit, as set forth in the Declaration of Condominium, and generally only includes the airspace with the Unit (the "Engineering Method"). The other method, which is customarily used in sales brochures, generally measures the Unit to the outside finished surface of exterior walls and to the centerline of interior demising walls, includes portions of the adjacent Common Elements of the Condominium (the "Architectural Method"). The estimated square footage of the Unit, as determined under the Architectural Method, will be greater than the estimated square footage as determined under the Engineering Method. The Architectural Method is generally used in sales materials and may be provided to allow a prospective buyer to compare the Unit with units in other condominium projects that utilize this method of measurement.



RIVA

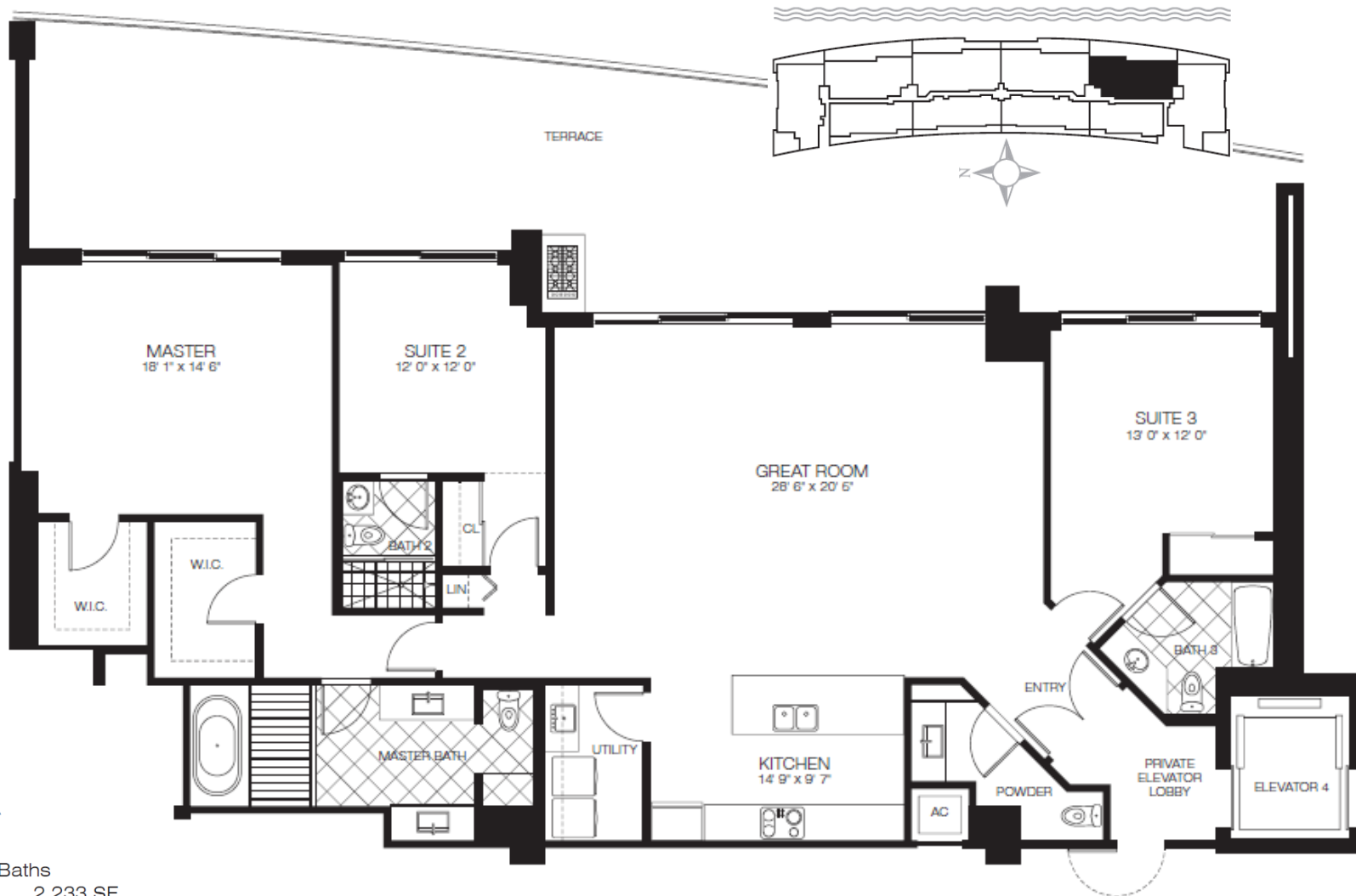
RESIDENCE 08

3 Bedrooms 3½ Baths

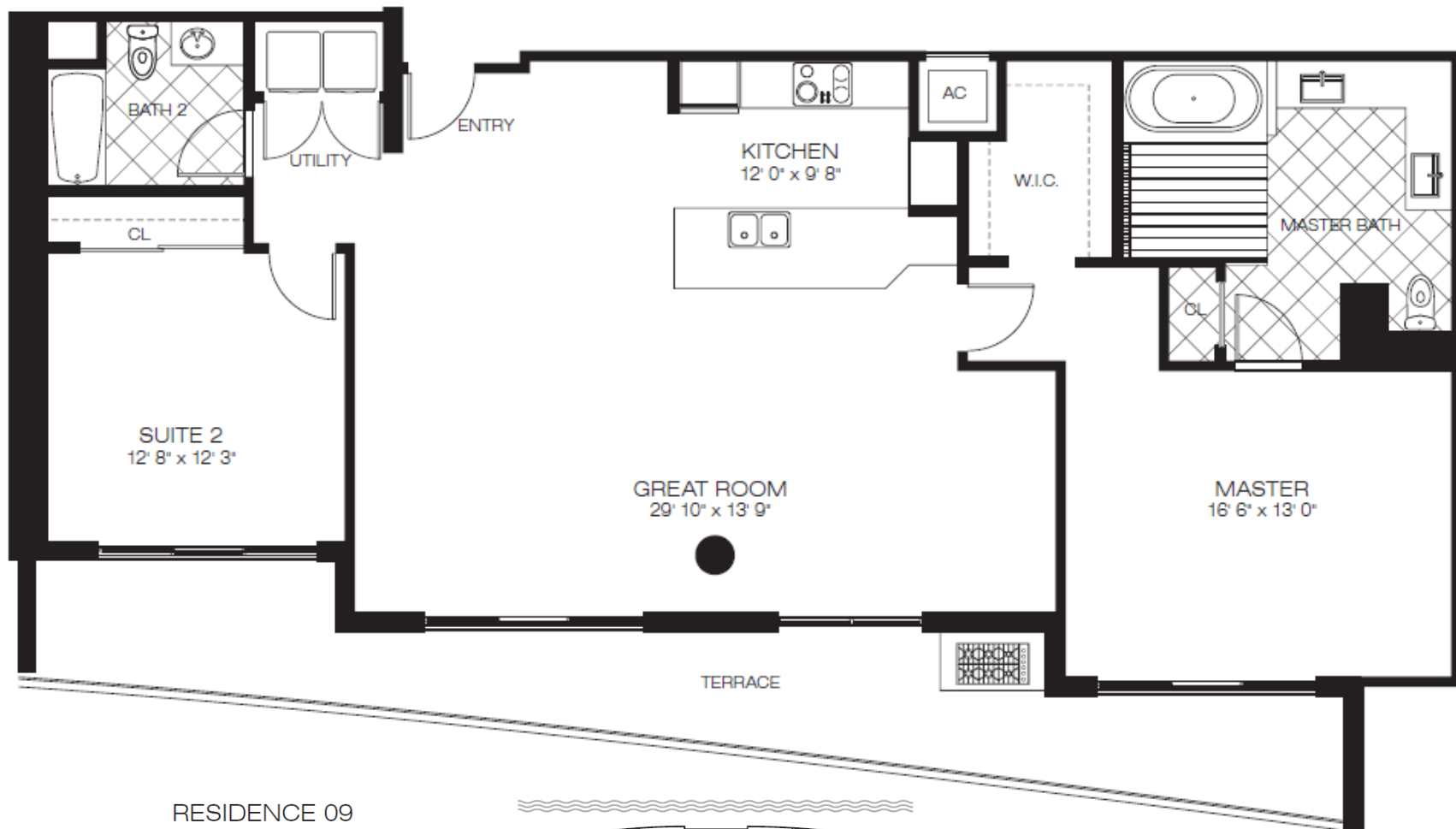
A.C. Living Space 2,233 SF

Terrace 907 SF

Total Living Space 3,140 SF



Unit Dimensions and Square Footages. There are two generally accepted methods of measuring the boundaries of units in residential condominiums. The first method is based on the description of the boundaries of the Unit, as set forth in the Declaration of Condominium, and generally only includes the airspace with the Unit (the "Engineering Method"). The other method, which is customarily used in sales brochures, generally measures the Unit to the outside finished surface of exterior walls and to the centerline of interior demising walls, includes portions of the adjacent Common Elements of the Condominium (the "Architectural Method"). The estimated square footage of the Unit, as determined under the Architectural Method, will be greater than the estimated square footage as determined under the Engineering Method. The Architectural Method is generally used in sales materials and may be provided to allow a prospective buyer to compare the Unit with units in other condominium projects that utilize this method of measurement.



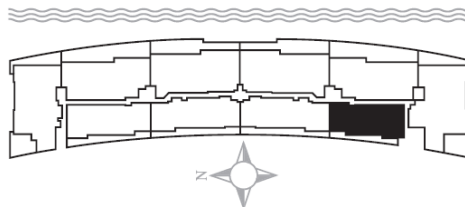
RESIDENCE 09

2 Bedrooms 2 Baths

A.C. Living Space 1,538 SF

Terrace 292 SF

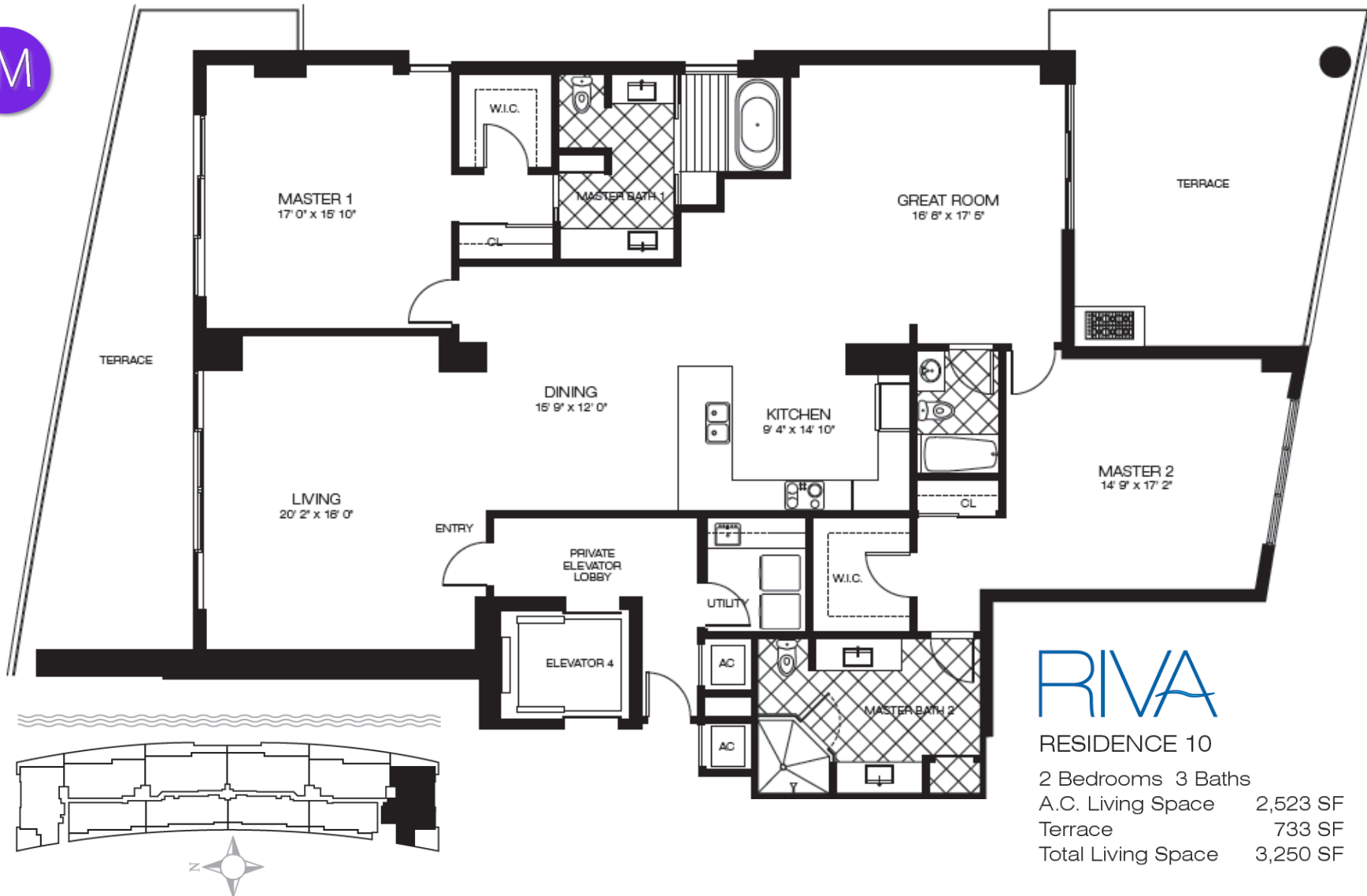
Total Living Space 1,830 SF



RIVA



Unit Dimensions and Square Footages. There are two generally accepted methods of measuring the boundaries of units in residential condominiums. The first method is based on the description of the boundaries of the Unit, as set forth in the Declaration of Condominium, and generally only includes the airspace with the Unit (the "Engineering Method"). The other method, which is customarily used in sales brochures, generally measures the Unit to the outside finished surface of exterior walls and to the centerline of interior demising walls, includes portions of the adjacent Common Elements of the Condominium (the "Architectural Method"). The estimated square footage of the Unit, as determined under the Architectural Method, will be greater than the estimated square footage as determined under the Engineering Method. The Architectural Method is generally used in sales materials and may be provided to allow a prospective buyer to compare the Unit with units in other condominium projects that utilize this method of measurement.



Unit Dimensions and Square Footages. There are two generally accepted methods of measuring the boundaries of units in residential condominiums. The first method is based on the description of the boundaries of the Unit, as set forth in the Declaration of Condominium, and generally only includes the airspace with the Unit (the "Engineering Method"). The other method, which is customarily used in sales brochures, generally measures the Unit to the outside finished surface of exterior walls and to the centerline of interior demising walls, includes portions of the adjacent Common Elements of the Condominium (the "Architectural Method"). The estimated square footage of the Unit, as determined under the Architectural Method, will be greater than the estimated square footage as determined under the Engineering Method. The Architectural Method is generally used in sales materials and may be provided to allow a prospective buyer to compare the Unit with units in other condominium projects that utilize this method of measurement.



Juan G. Ramirez, P.A.
Real Estate & Business Consultant, e-PRO, TRC
Pre-Construction Specialist
La Rosa Realty, LLC

www.JuanMiami.com
Miami – Broward - Florida

Direct: +1.786.253.7621
Email: info@JuanMiami.com

