

5252 | PASEO

FLOOR PLANS



JUANMIAMI.COM

FLORIDA REAL ESTATE

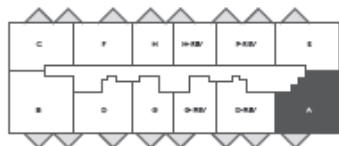
RESIDENCE A

3 BEDROOMS/2 BATHS

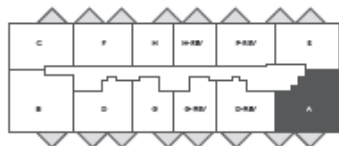
TOTAL AREA: 1,455 SQ.FT. / 135.17 M²



LEVELS 04, 06, 08, 10, 12, 15, 17, 19



LEVELS 05, 07, 09, 11, 14, 16, 18



Stated dimensions are measured to the exterior boundaries of the exterior walls and the centerline of interior demising walls and in fact vary from the dimensions that would be determined by using the description and definition of the "Unit" set forth in the Declaration (which generally only includes the interior airspace between the perimeter walls and excludes interior structural components). For your reference, the area of the Unit, determined in accordance with those defined unit boundaries, is + or - 1,331 sq. ft./123.65 m². Note that measurements of rooms set forth on this floor plan are generally taken at the greatest points of each given room (as if the rooms were a perfect rectangle), without regard for any cutouts. Accordingly, the area of the actual rooms will typically be smaller than the product obtained by multiplying the stated length times width. All dimensions are approximate and may vary with actual construction. The rooms illustrated in the floor plans depicted in this brochure are not drawn to scale. All floor plans and development plans are subject change. Note that window location will slightly change depending on balcony and floor location. Unit balconies depend on floor selection.

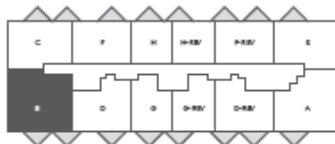
RESIDENCE B

3 BEDROOMS/DEN/2 BATHS

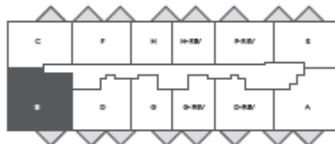
TOTAL AREA: 1,577 SQ.FT. / 146.50 M²



LEVELS 04, 06, 08, 10, 12, 15, 17, 19



LEVELS 05, 07, 09, 11, 14, 16, 18



Standard dimensions are measured to the exterior boundaries of the exterior walls and the centerline of interior demising walls and in fact vary from the dimensions that would be determined by using the description and definition of the "Unit" set forth in the Declaration (which generally only includes the interior airspace between the perimeter walls and excludes interior structural components). For your reference, the area of the Unit, determined in accordance with those defined unit boundaries, is +/- 1,331 sq. ft./123.65 m². Note that measurements of rooms set forth on this floor plan are generally taken at the greatest points of each given room (as if the rooms were a perfect rectangle), without regard for any cutouts. Accordingly, the area of the actual rooms will typically be smaller than the product obtained by multiplying the stated length times width. All dimensions are approximate and may vary with actual construction. The rooms illustrated in the floor plans depicted in this brochure are not drawn to scale. All floor plans and development plans are subject change. Note that window location will slightly change depending on balcony and floor location. Unit balconies depend on floor selection.

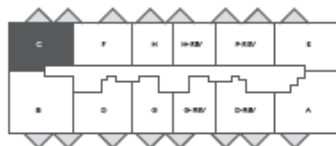
RESIDENCE C

2 BEDROOMS/2 BATHS

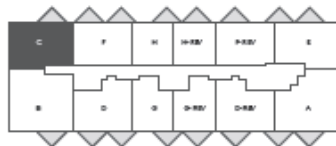
TOTAL AREA: 1,195 SQ.FT. / 111.01 M²



LEVELS 04, 06, 08, 10, 12, 15, 17, 19



LEVELS 05, 07, 09, 11, 14, 16, 18



Standard dimensions are measured to the exterior boundaries of the exterior walls and the centerline of interior demising walls and in fact vary from the dimensions that would be determined by using the description and definition of the "Unit" set forth in the Declaration (which generally only includes the interior space between the perimeter walls and excludes interior structural components). For your reference, the area of the Unit, determined in accordance with those defined unit boundaries, is + or - 1,331 sq. ft./123.65 m². Note that measurements of rooms set forth on this floor plan are generally taken at the greatest points of each given room (as if the rooms were a perfect rectangle), without regard for any cutouts. Accordingly, the area of the actual rooms will typically be smaller than the product obtained by multiplying the stated length times width. All dimensions are approximate and may vary with actual construction. The rooms illustrated in the floor plans depicted in this brochure are not drawn to scale. All floor plans and development plans are subject change. Note that window location will slightly change depending on balcony and floor location. Unit balconies depend on floor selection.

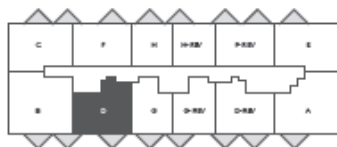
RESIDENCE D

2 BEDROOMS/DEN/2 BATHS

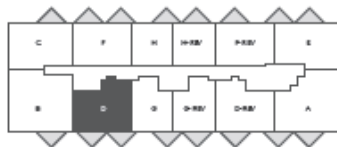
TOTAL AREA: 1,166 SQ.FT. / 108.32 M²



LEVELS 04, 06, 08, 10, 12, 15, 17, 19



LEVELS 05, 07, 09, 11, 14, 16, 18



Standard dimensions are measured to the exterior boundaries of the exterior walls and the centerline of interior demising walls and in fact vary from the dimensions that would be determined by using the description and definition of the "Unit" set forth in the Declaration (which generally only includes the interior drapery between the perimeter walls and excludes interior structural components). For your reference, the area of the Unit, determined in accordance with those defined unit boundaries, is + or - 1,331 sq. ft./123.65 m². Note that measurements of rooms set forth on this floor plan are generally taken at the greatest points of each given room (as if the rooms were a perfect rectangle), without regard for any cutouts. Accordingly, the area of the actual rooms will typically be smaller than the product obtained by multiplying the stated length times width. All dimensions are approximate and may vary with actual construction. The rooms illustrated in the floor plans depicted in this brochure are not drawn to scale. All floor plans and development plans are subject change. Note that window location will slightly change depending on balcony and floor location. Unit balconies depend on floor selection.

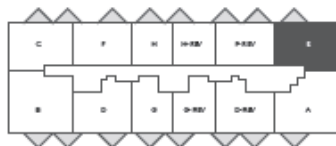
RESIDENCE E

2 BEDROOMS/ 2 BATHS

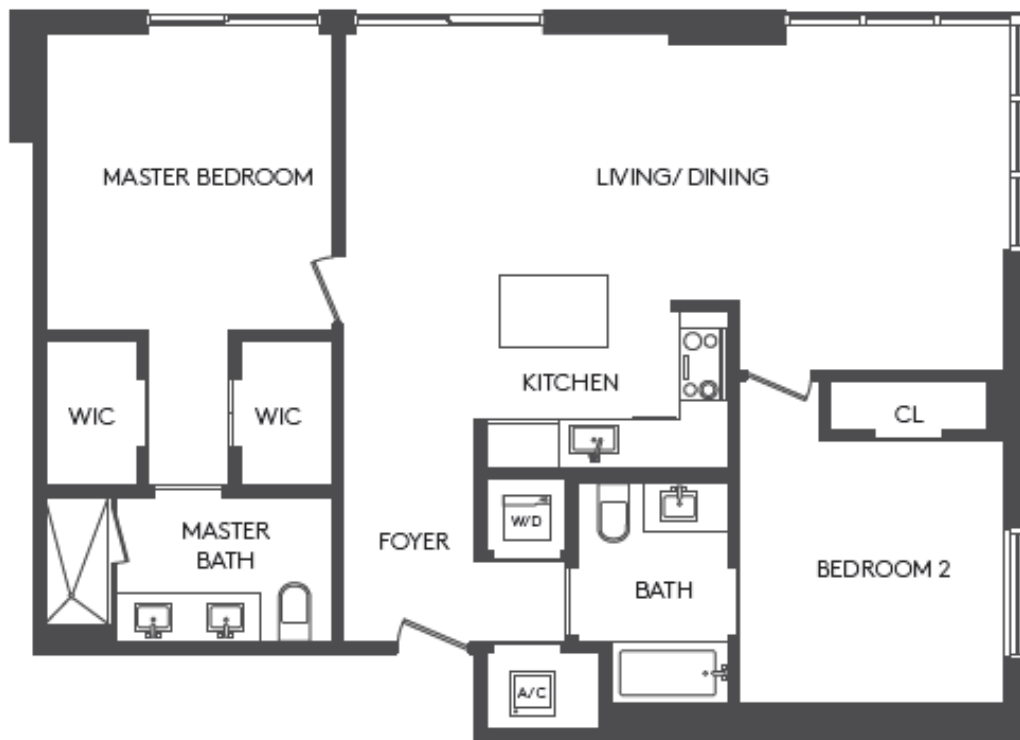
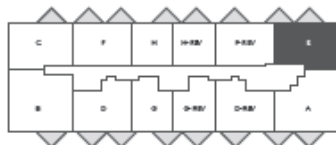
TOTAL AREA: 1,163 SQ.FT. / 108.04 M²



LEVELS 04, 06, 08, 10, 12, 15, 17, 19



LEVELS 05, 07, 09, 11, 14, 16, 18



Standard dimensions are measured to the exterior boundaries of the exterior walls and the centerline of interior demising walls and in fact vary from the dimensions that would be determined by using the description and definition of the "Unit" set forth in the Declaration (which generally only includes the interior space between the perimeter walls and excludes interior structural components). For your reference, the area of the Unit, determined in accordance with those defined unit boundaries, is + or - 1,331 sq. ft./123.65 m². Note that measurements of rooms set forth on this floor plan are generally taken at the greatest points of each given room (as if the rooms were a perfect rectangle), without regard for any cutouts. Accordingly, the area of the actual rooms will typically be smaller than the product obtained by multiplying the stated length times width. All dimensions are approximate and may vary with actual construction. The rooms illustrated in the floor plans depicted in this brochure are not drawn to scale. All floor plans and development plans are subject change. Note that window location will slightly change depending on balcony and floor location. Unit balconies depend on floor selection.

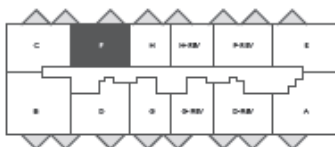
RESIDENCE F

2 BEDROOMS/ 2 BATHS

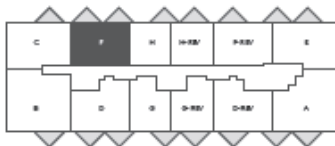
TOTAL AREA: 1,038 SQ.FT. / 96.43 M²



LEVELS 04, 06, 08, 10, 12, 15, 17, 19



LEVELS 05, 07, 09, 11, 14, 16, 18



Stated dimensions are measured to the exterior boundaries of the exterior walls and the centerline of interior demising walls and in fact vary from the dimensions that would be determined by using the description and definition of the "Unit" set forth in the Declaration (which generally only includes the interior drapery between the perimeter walls and excludes interior structural components). For your reference, the area of the Unit, determined in accordance with those defined unit boundaries, is + or - 1,331 sq. ft./123.65 m². Note that measurements of rooms set forth on this floor plan are generally taken at the greatest points of each given room (as if the rooms were a perfect rectangle), without regard for any cutouts. Accordingly, the area of the actual rooms will typically be smaller than the product obtained by multiplying the stated length times width. All dimensions are approximate and may vary with actual construction. The rooms illustrated in the floor plans depicted in this brochure are not drawn to scale. All floor plans and development plans are subject change. Note that window location will slightly change depending on balcony and floor location. Unit balconies depend on floor selection.

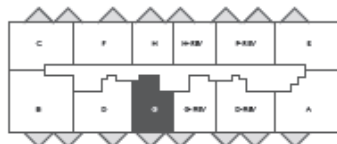
RESIDENCE G

1 BEDROOM/DEN/1 BATH

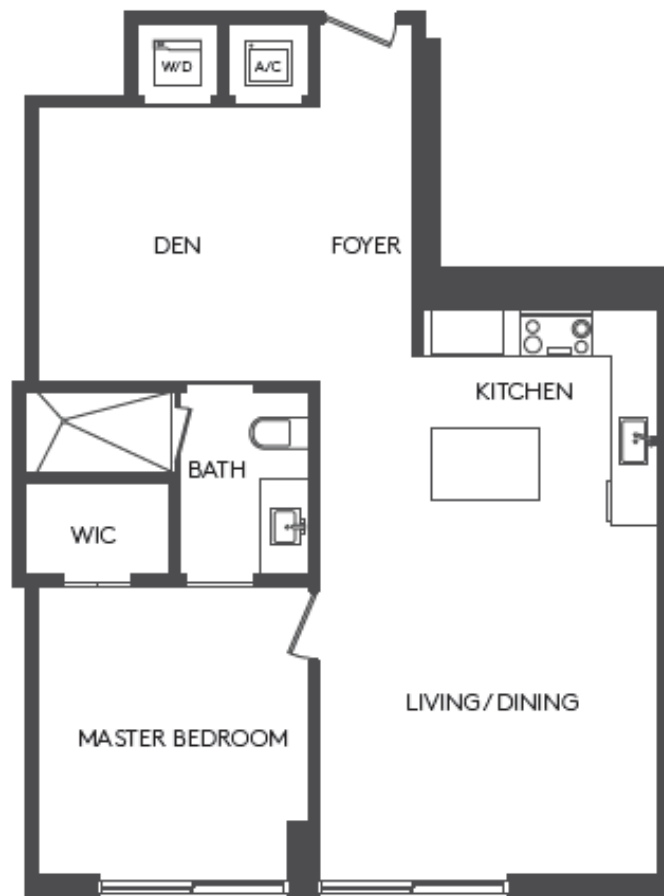
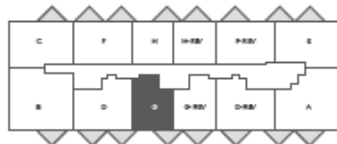
TOTAL AREA: 848 SQ.FT. / 78.78 M²



LEVELS 04, 06, 08, 10, 12, 15, 17, 19



LEVELS 05, 07, 09, 11, 14, 16, 18



Stated dimensions are measured to the exterior boundaries of the exterior walls and the centerline of interior demising walls and in fact vary from the dimensions that would be determined by using the description and definition of the "Unit" set forth in the Declaration (which generally only includes the interior drispace between the perimeter walls and excludes interior structural components). For your reference, the area of the Unit, determined in accordance with those defined unit boundaries, is + or - 1,331 sq. ft./123.65 m². Note that measurements of rooms set forth on this floor plan are generally taken at the greatest points of each given room (as if the rooms were a perfect rectangle), without regard for any cutouts. Accordingly, the area of the actual rooms will typically be smaller than the product obtained by multiplying the stated length times width. All dimensions are approximate and may vary with actual construction. The rooms illustrated in the floor plans depicted in this brochure are not drawn to scale. All floor plans and development plans are subject change. Note that window location will slightly change depending on balcony and floor location. Unit balconies depend on floor selection.

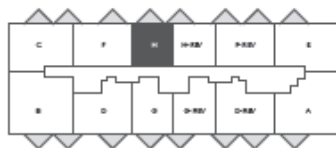
RESIDENCE H

1 BEDROOM/1 BATH

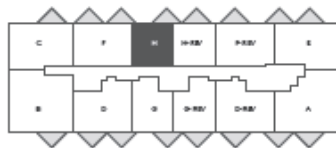
TOTAL AREA: 755 SQ.FT. / 70.14 M²



LEVELS 04, 06, 08, 10, 12, 15, 17, 19



LEVELS 05, 07, 09, 11, 14, 16, 18

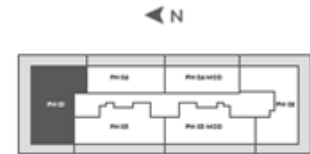


Stated dimensions are measured to the exterior boundaries of the exterior walls and the centerline of interior demising walls and in fact vary from the dimensions that would be determined by using the description and definition of the "Unit" set forth in the Declaration (which generally only includes the interior drapery between the perimeter walls and excludes interior structural components). For your reference, the area of the Unit, determined in accordance with those defined unit boundaries, is + or - 1,331 sq. ft./123.65 m². Note that measurements of rooms set forth on this floor plan are generally taken at the greatest points of each given room (as if the rooms were a perfect rectangle), without regard for any cutouts. Accordingly, the area of the actual rooms will typically be smaller than the product obtained by multiplying the stated length times width. All dimensions are approximate and may vary with actual construction. The rooms illustrated in the floor plans depicted in this brochure are not drawn to scale. All floor plans and development plans are subject change. Note that window location will slightly change depending on balcony and floor location. Unit balconies depend on floor selection.

LPH-1/PH1

3 BEDROOMS/DEN/3 BATHS

TOTAL AREA: 1,927 SQ.FT. / 179.02 M²



Stated dimensions are measured to the exterior boundaries of the exterior walls and the centerline of interior demising walls and in fact vary from the dimensions that would be determined by using the description and definition of the "Unit" set forth in the Declaration (which generally only includes the interior airspace between the perimeter walls and excludes interior structural components). For your reference, the area of the Unit, determined in accordance with those defined unit boundaries, is + or - 1,331 sq. ft./123.65 m². Note that measurements of rooms set forth on this floor plan are generally taken at the greatest points of each given room (as if the rooms were a perfect rectangle), without regard for any cutouts. Accordingly, the area of the actual rooms will typically be smaller than the product obtained by multiplying the stated length times width. All dimensions are approximate and may vary with actual construction. The rooms illustrated in the floor plans depicted in this brochure are not drawn to scale. All floor plans and development plans are subject change. Note that window location will slightly change depending on balcony and floor location. Unit balconies depend on floor selection.

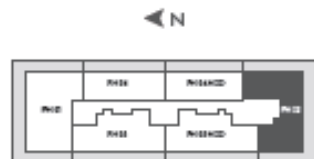


JUANMIAMI.COM
FLORIDA REAL ESTATE

LPH-2/PH2

3 BEDROOMS/DEN/3 BATHS

TOTAL AREA: 1,735 SQ.FT. / 161.18 M²

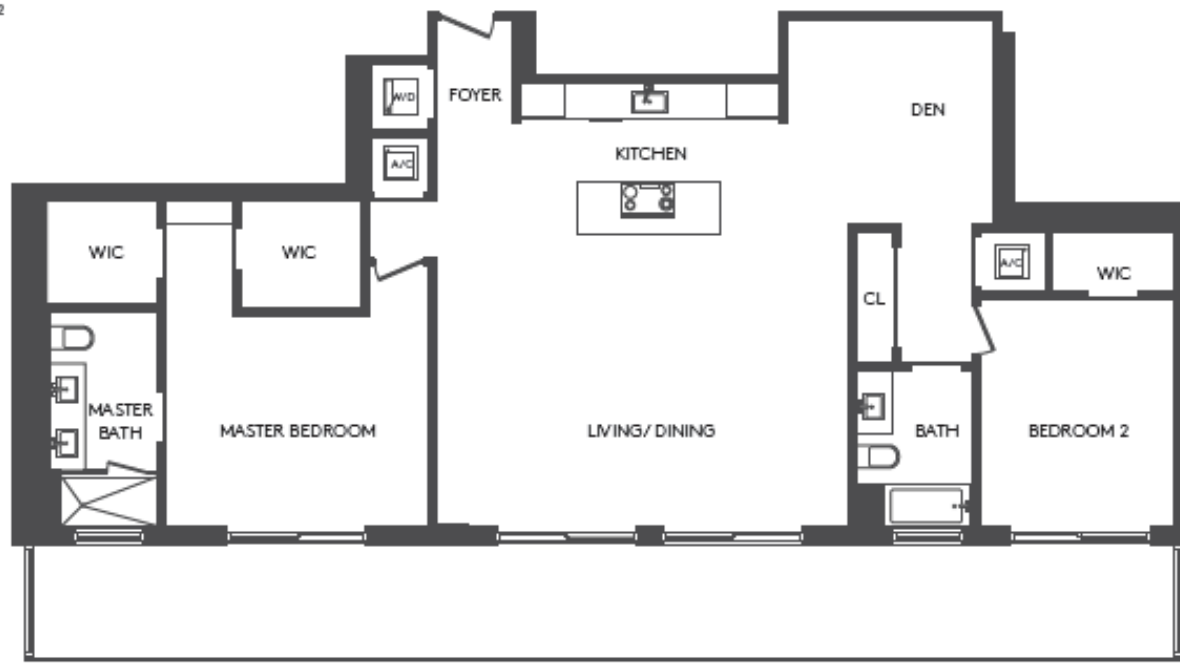


Stated dimensions are measured to the exterior boundaries of the exterior walls and the centerline of interior demising walls and in fact vary from the dimensions that would be determined by using the description and definition of the "Unit" set forth in the Declaration (which generally only includes the interior airspace between the perimeter walls and excludes interior structural components). For your reference, the area of the Unit, determined in accordance with those defined unit boundaries, is + or - 1,331 sq. ft./123.65 m². Note that measurements of rooms set forth on this floor plan are generally taken at the greatest points of each given room (as if the rooms were a perfect rectangle), without regard for any cutouts. Accordingly, the area of the actual rooms will typically be smaller than the product obtained by multiplying the stated length times width. All dimensions are approximate and may vary with actual construction. The rooms illustrated in the floor plans depicted in this brochure are not drawn to scale. All floor plans and development plans are subject change. Note that window location will slightly change depending on balcony and floor location. Unit balconies depend on floor selection.

LPH-3/PH3

2 BEDROOMS/ DEN/ 2 BATHS

TOTAL AREA: 1,560 SQ. FT. / 144.92 M²

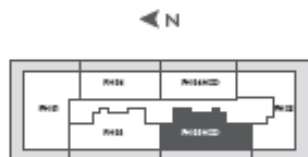


Stated dimensions are measured to the exterior boundaries of the exterior walls and the centerline of interior demising walls and in fact vary from the dimensions that would be determined by using the description and definition of the "Unit" set forth in the Declaration (which generally only includes the interior airspace between the perimeter walls and excludes interior structural components). For your reference, the area of the Unit, determined in accordance with those defined unit boundaries, is + or - 1,331 sq. ft./123.65 m². Note that measurements of rooms set forth on this floor plan are generally taken at the greatest points of each given room (as if the rooms were a perfect rectangle), without regard for any cutouts. Accordingly, the area of the actual rooms will typically be smaller than the product obtained by multiplying the stated length times width. All dimensions are approximate and may vary with actual construction. The rooms illustrated in the floor plans depicted in this brochure are not drawn to scale. All floor plans and development plans are subject change. Note that window location will slightly change depending on balcony and floor location. Unit balconies depend on floor selection.

LPH-3 MOD /PH3 MOD

2 BEDROOMS/ DEN/ 2 BATHS

TOTAL AREA: 1,557 SQ.FT. / 144.65 M²

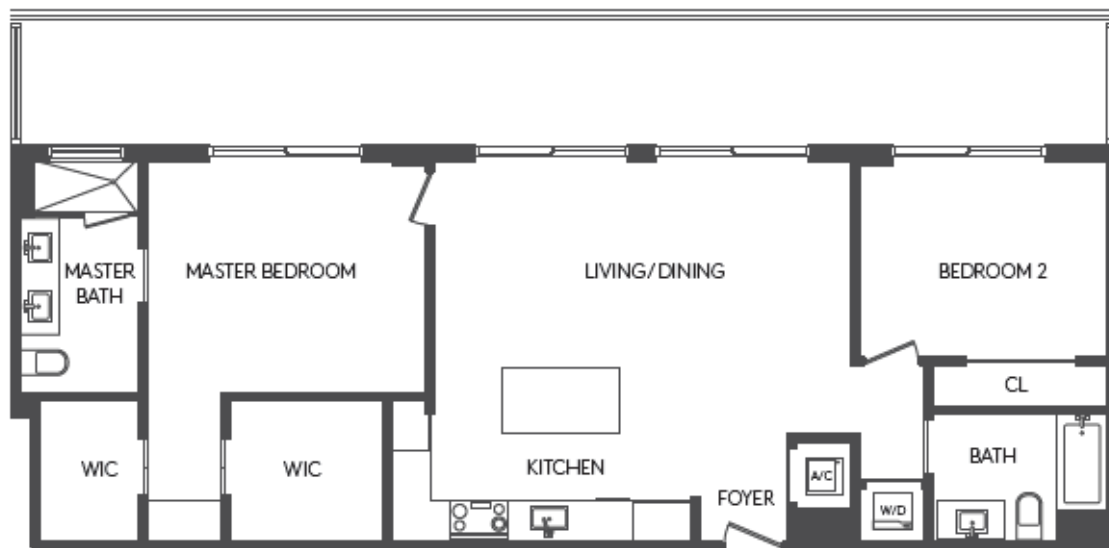


Stated dimensions are measured to the exterior boundaries of the exterior walls and the centerline of interior demising walls and in fact vary from the dimensions that would be determined by using the description and definition of the "Unit" set forth in the Declaration (which generally only includes the interior airspace between the perimeter walls and excludes interior structural components). For your reference, the area of the Unit, determined in accordance with those defined unit boundaries, is + or - 1,331 sq. ft./123.65 m². Note that measurements of rooms set forth on this floor plan are generally taken at the greatest points of each given room (as if the rooms were a perfect rectangle), without regard for any cutouts. Accordingly, the area of the actual rooms will typically be smaller than the product obtained by multiplying the stated length times width. All dimensions are approximate and may vary with actual construction. The rooms illustrated in the floor plans depicted in this brochure are not drawn to scale. All floor plans and development plans are subject change. Note that window location will slightly change depending on balcony and floor location. Unit balconies depend on floor selection.

LPH-4 /PH4

2 BEDROOMS/2 BATHS

TOTAL AREA: 1,168 SQ.FT. / 108.51 M²

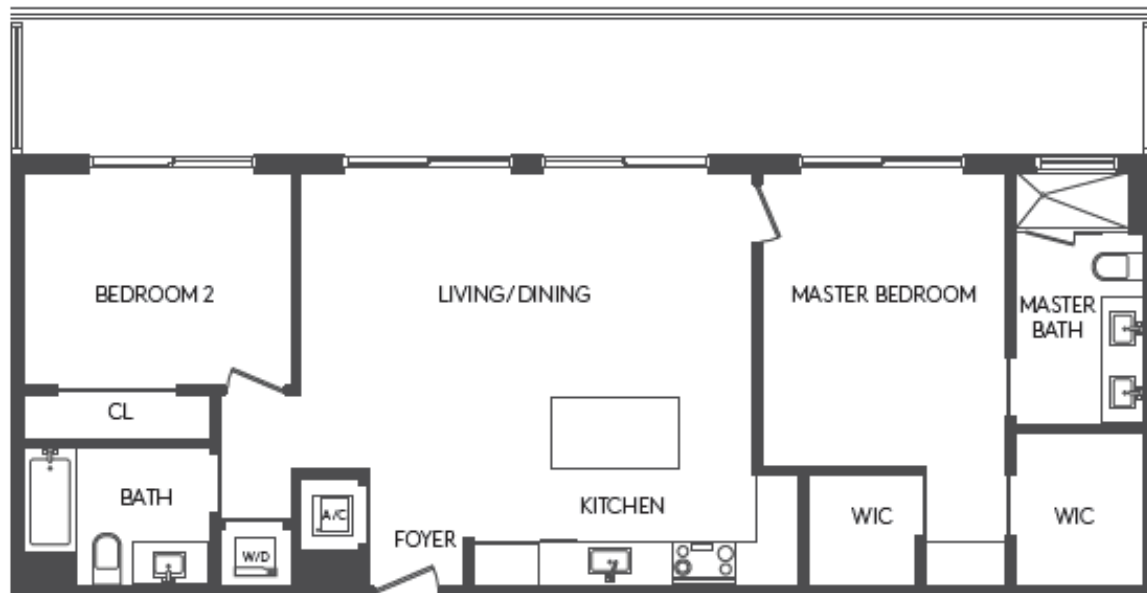
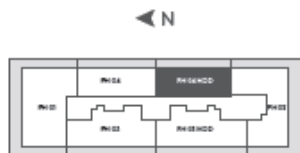


Stated dimensions are measured to the exterior boundaries of the exterior walls and the centerline of interior demising walls and in fact vary from the dimensions that would be determined by using the description and definition of the "Unit" set forth in the Declaration (which generally only includes the interior airspace between the perimeter walls and excludes interior structural components). For your reference, the area of the Unit, determined in accordance with those defined unit boundaries, is + or - 1,331 sq. ft./123.65 m². Note that measurements of rooms set forth on this floor plan are generally taken at the greatest points of each given room (as if the rooms were a perfect rectangle), without regard for any cutouts. Accordingly, the area of the actual rooms will typically be smaller than the product obtained by multiplying the stated length times width. All dimensions are approximate and may vary with actual construction. The rooms illustrated in the floor plans depicted in this brochure are not drawn to scale. All floor plans and development plans are subject change. Note that window location will slightly change depending on balcony and floor location. Unit balconies depend on floor selection.

LPH-4 MOD /PH4 MOD

2 BEDROOMS/2 BATHS

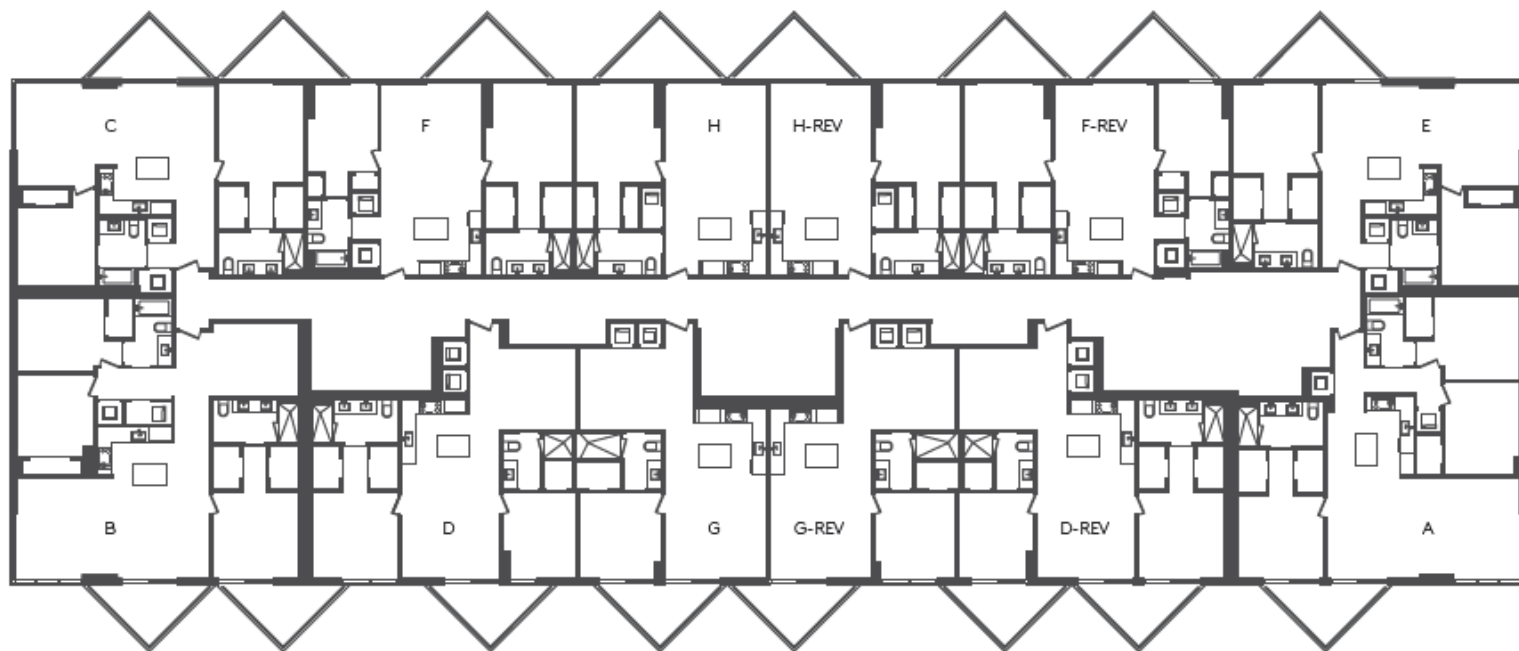
TOTAL AREA: 1,118 SQ.FT. / 103.86 M²



Stated dimensions are measured to the exterior boundaries of the exterior walls and the centerline of interior demising walls and in fact vary from the dimensions that would be determined by using the description and definition of the "Unit" set forth in the Declaration (which generally only includes the interior airspace between the perimeter walls and excludes interior structural components). For your reference, the area of the Unit, determined in accordance with those defined unit boundaries, is + or - 1,331 sq. ft./123.65 m². Note that measurements of rooms set forth on this floor plan are generally taken at the greatest points of each given room (as if the rooms were a perfect rectangle), without regard for any cutouts. Accordingly, the area of the actual rooms will typically be smaller than the product obtained by multiplying the stated length times width. All dimensions are approximate and may vary with actual construction. The rooms illustrated in the floor plans depicted in this brochure are not drawn to scale. All floor plans and development plans are subject change. Note that window location will slightly change depending on balcony and floor location. Unit balconies depend on floor selection.

RESIDENCES SITE PLAN

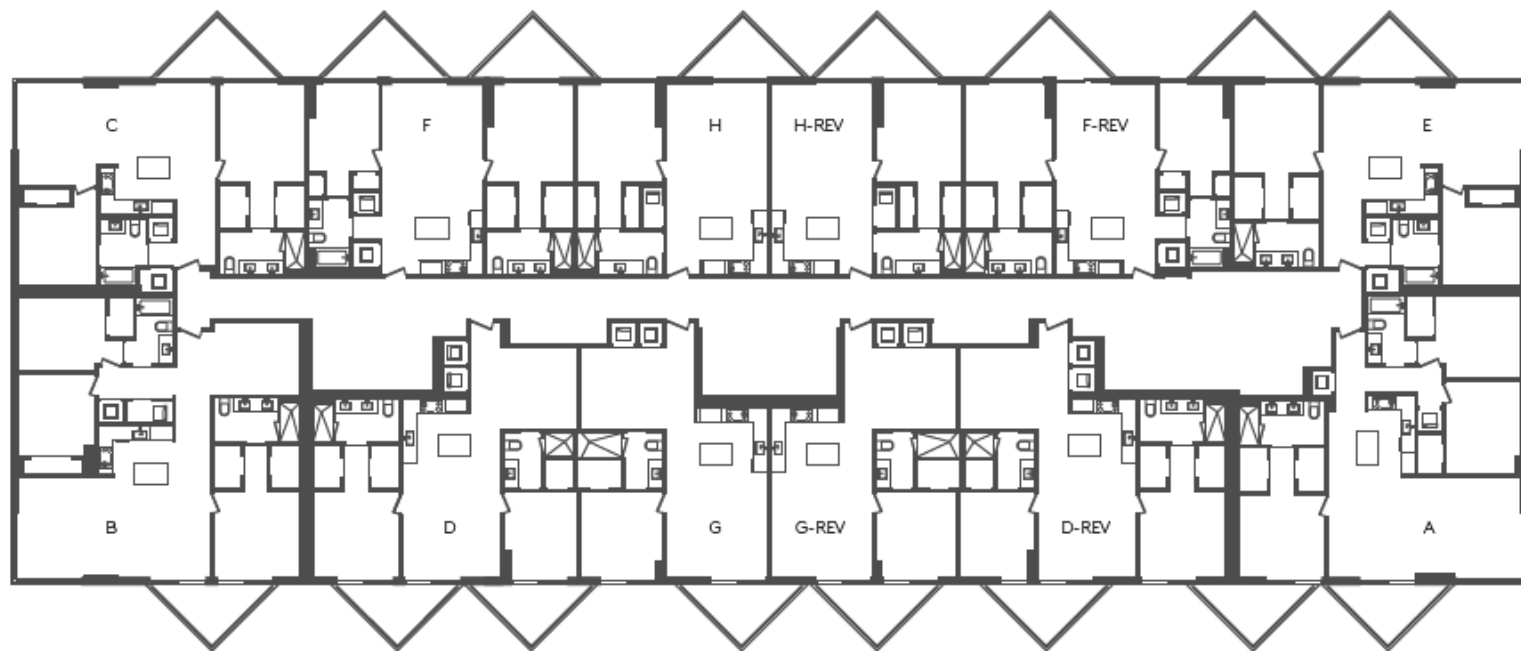
LEVELS 04, 06, 08, 10, 12, 15, 17, 19



Stated dimensions are measured to the exterior boundaries of the exterior walls and the centerline of interior demising walls and in fact vary from the dimensions that would be determined by using the description and definition of the "Unit" set forth in the Declaration (which generally only includes the interior airspace between the perimeter walls and excludes interior structural components). For your reference, the area of the Unit, determined in accordance with those defined unit boundaries, is + or - 1,331 sq. ft./123.65 m². Note that measurements of rooms set forth on this floor plan are generally taken at the greatest points of each given room (as if the rooms were a perfect rectangle), without regard for any cutouts. Accordingly, the area of the actual rooms will typically be smaller than the product obtained by multiplying the stated length times width. All dimensions are approximate and may vary with actual construction. The rooms illustrated in the floor plans depicted in this brochure are not drawn to scale. All floor plans and development plans are subject change. Note that window location will slightly change depending on balcony and floor location. Unit balconies depend on floor selection.

RESIDENCES SITE PLAN

LEVELS 05, 07, 09, 11, 14, 16, 18



Stated dimensions are measured to the exterior boundaries of the exterior walls and the centerline of interior demising walls and in fact vary from the dimensions that would be determined by using the description and definition of the "Unit" set forth in the Declaration (which generally only includes the interior space between the perimeter walls and excludes interior structural components). For your reference, the area of the Unit, determined in accordance with those defined unit boundaries, is + or - 1,331 sq. ft./123.65 m². Note that measurements of rooms set forth on this floor plan are generally taken at the greatest points of each given room (as if the rooms were a perfect rectangle), without regard for any cutouts. Accordingly, the area of the actual rooms will typically be smaller than the product obtained by multiplying the stated length times width. All dimensions are approximate and may vary with actual construction. The rooms illustrated in the floor plans depicted in this brochure are not drawn to scale. All floor plans and development plans are subject change. Note that window location will slightly change depending on balcony and floor location. Unit balconies depend on floor selection.

PH SITE PLAN

LEVELS 20 TO 21



5252 | PASEO

CITY LIFE REIMAGINED.

Juan G. Ramirez, P.A.

Real Estate & Business Consultant, e-PRO, TRC
La Rosa Realty, LLC

www.JuanMiami.com

Miami – Broward - Florida

Direct: +1.786.253.7621

Email: info@JuanMiami.com

