

BRICKELL TEN

FLOOR PLANS

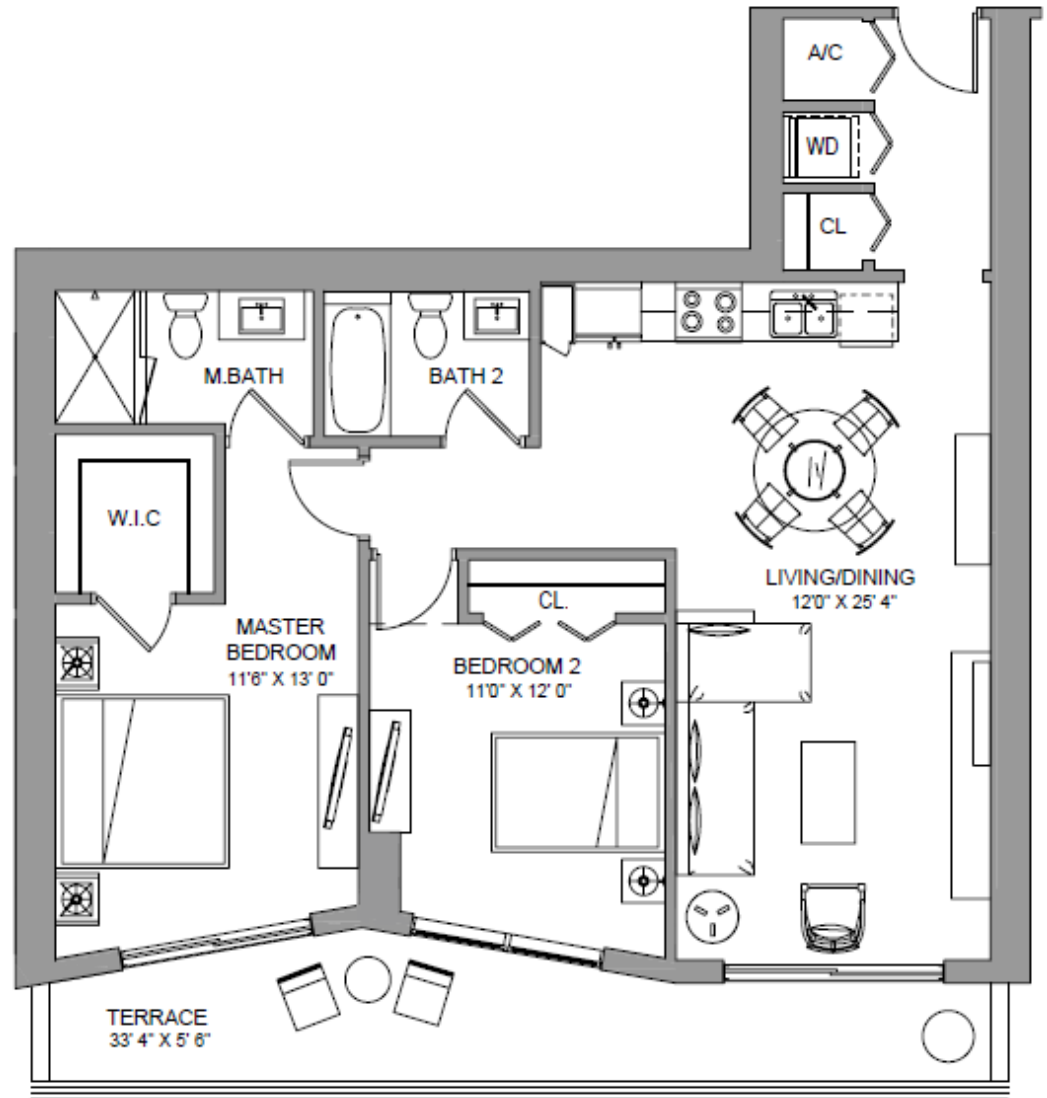
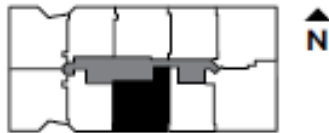
BRICKELL TEN

RESIDENCE ONE

2 BEDROOMS / 2 BATH

INTERIOR..... 1,064 FT² 99 M²
TERRACE..... 186 FT² 17 M²

TOTAL..... **1,250 FT²** **116 M²**

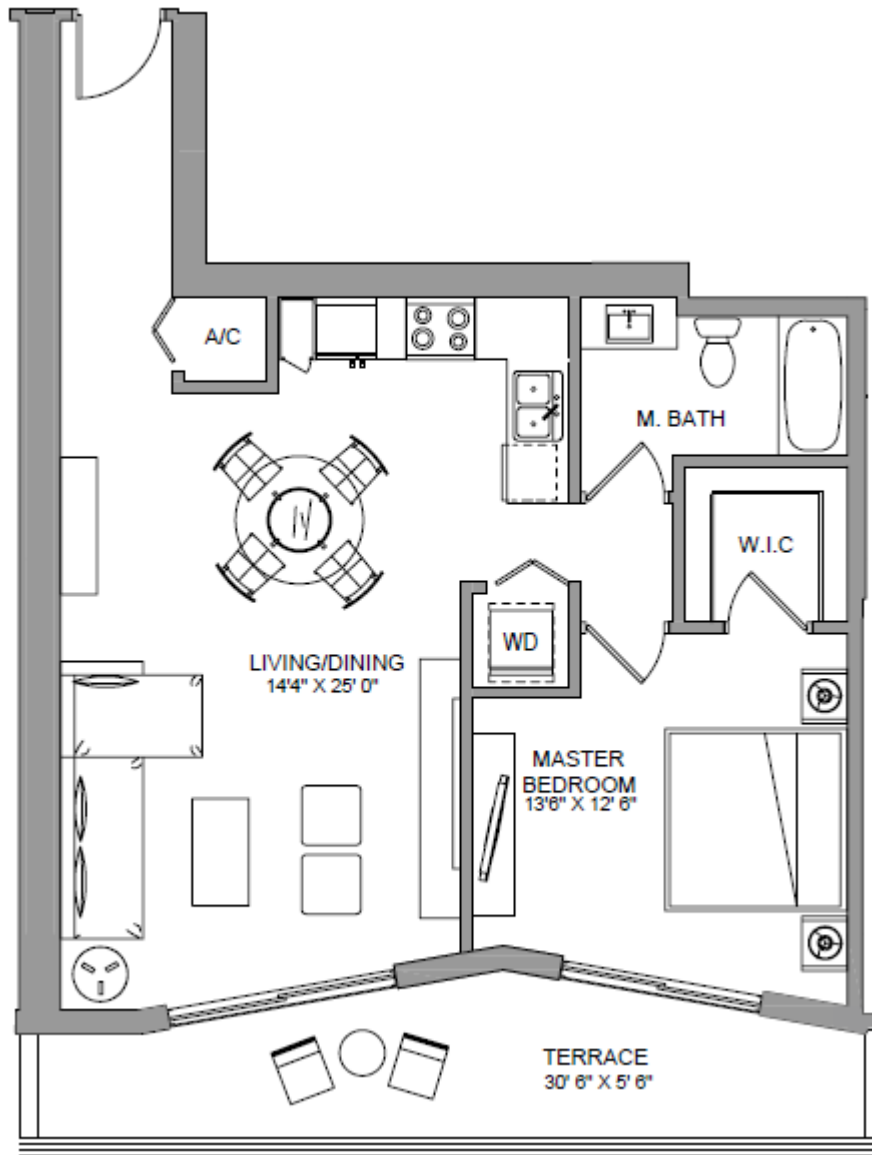


BRICKELL TEN

RESIDENCE TWO

1 BEDROOM / 1 BATH

INTERIOR.....	815 FT ²	76 M ²
TERRACE.....	165 FT ²	15 M ²
TOTAL	980 FT²	91 M²



SALES AND MARKETING BY
ONEWORLD
PROPERTIES

JM **JUANMIAMI.COM**
FLORIDA REAL ESTATE



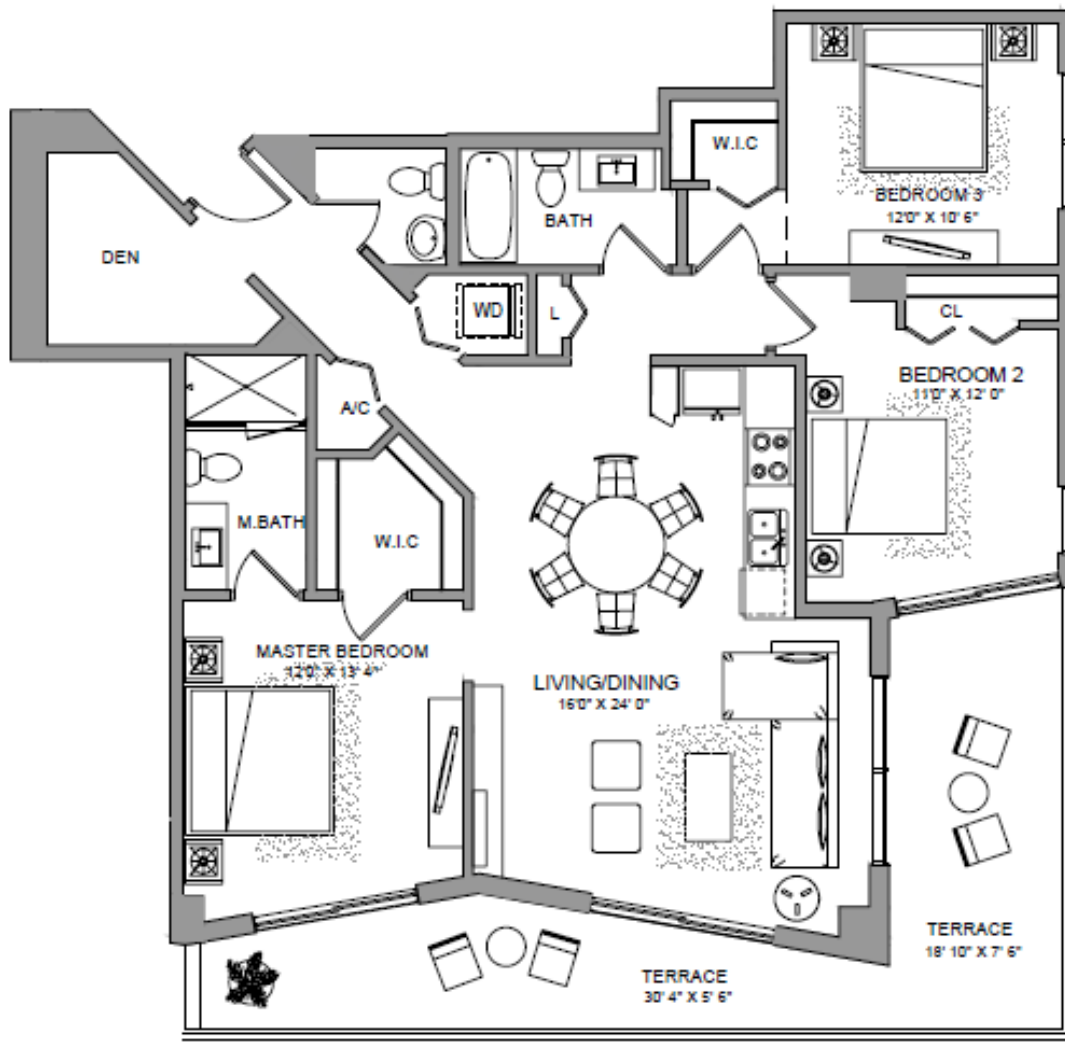
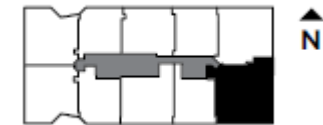
These drawings are conceptual only and are for the convenience of reference. They should not be relied upon as representations, express or implied, of the final detail of the residences. Units shown are examples of unit types and may not depict actual units. Stated square footages are ranges for a particular unit type and are measured to the exterior boundaries of the exterior walls and the centerline of interior demising walls and in fact vary from the area that would be determined by using the description and definition of the "Unit" set forth in the Declaration (which generally only includes the interior airspace between the perimeter walls and excludes interior structural components).

BRICKELLTEN

RESIDENCE THREE

3 BEDROOMS + DEN / 2 1/2 BATH

INTERIOR.....	1,387 FT ²	129 M ²
TERRACE.....	328 FT ²	31 M ²
TOTAL	1,715 FT²	160 M²



SALES AND MARKETING BY
ONEWORLD
PROPERTIES

JM JUANMIAMI.COM
FLORIDA REAL ESTATE



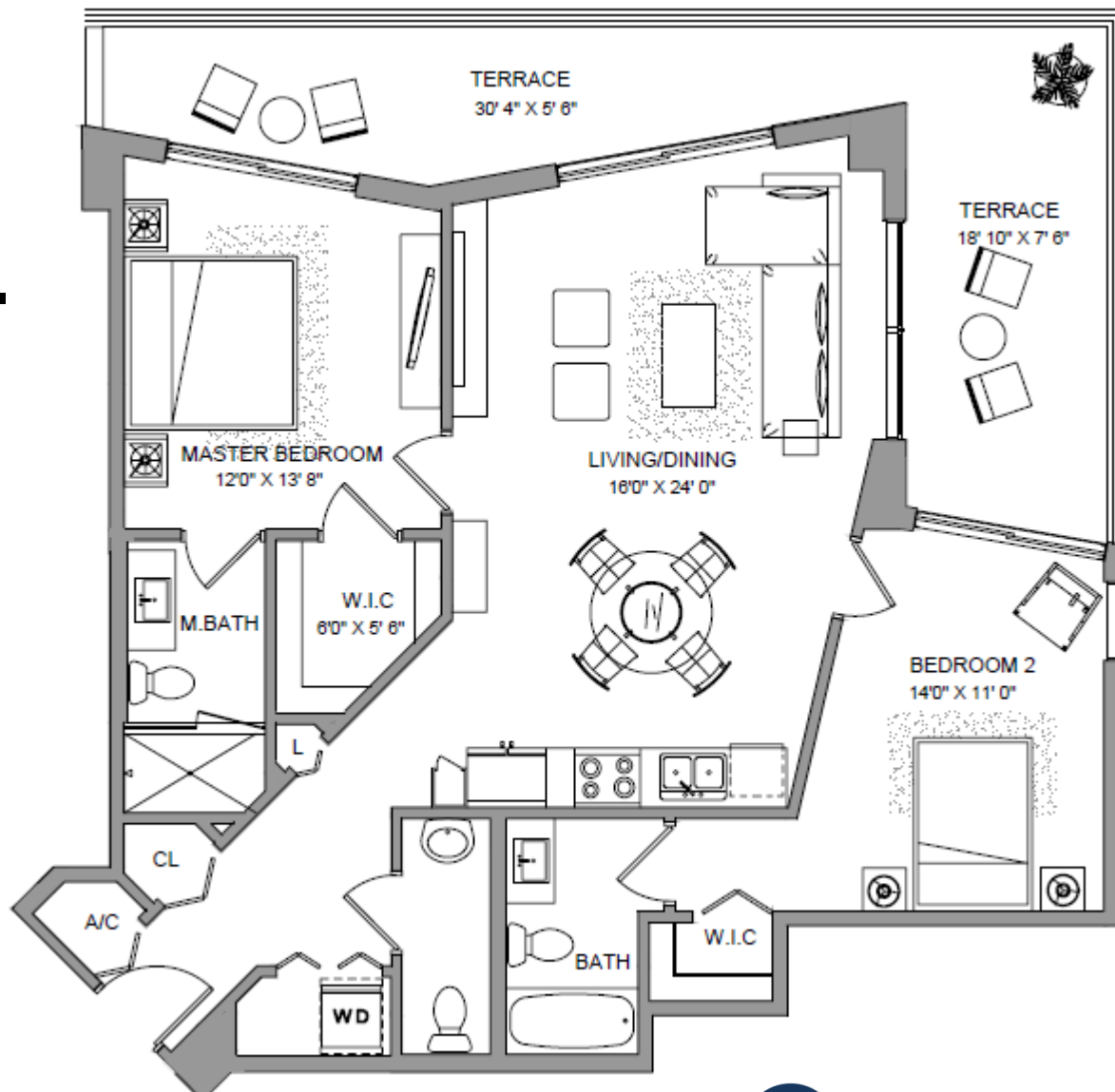
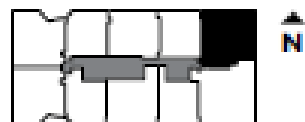
These drawings are conceptual only and are for the convenience of reference. They should not be relied upon as representations, express or implied, of the final detail of the residences. Units shown are examples of unit types and may not depict actual units. Stated square footages are ranges for a particular unit type and are measured to the exterior boundaries of the exterior walls and the centerline of interior demising walls and in fact vary from the area that would be determined by using the description and definition of the "Unit" set forth in the Declaration (which generally only includes the interior airspace between the perimeter walls and excludes interior structural components).

BRICKELLTEN

RESIDENCE FOUR

2 BEDROOMS / 2 1/2 BATH

INTERIOR	1,124 FT ²	105 M ²
TERRACE	328 FT ²	31 M ²
TOTAL	1,452 FT²	136 M²



SALES AND MARKETING BY
ONEWORLD
PROPERTIES

JM **JUANMIAMI.COM**
FLORIDA REAL ESTATE



These drawings are conceptual only and are for the convenience of reference. They should not be relied upon as representations, express or implied, of the final detail of the residences. Units shown are examples of unit types and may not depict actual units. Stated square footages are ranges for a particular unit type and are measured to the exterior boundaries of the exterior walls and the centerline of interior demising walls and in fact vary from the area that would be determined by using the description and definition of the "Unit" set forth in the Declaration (which generally only includes the interior airspace between the perimeter walls and excludes interior structural components).

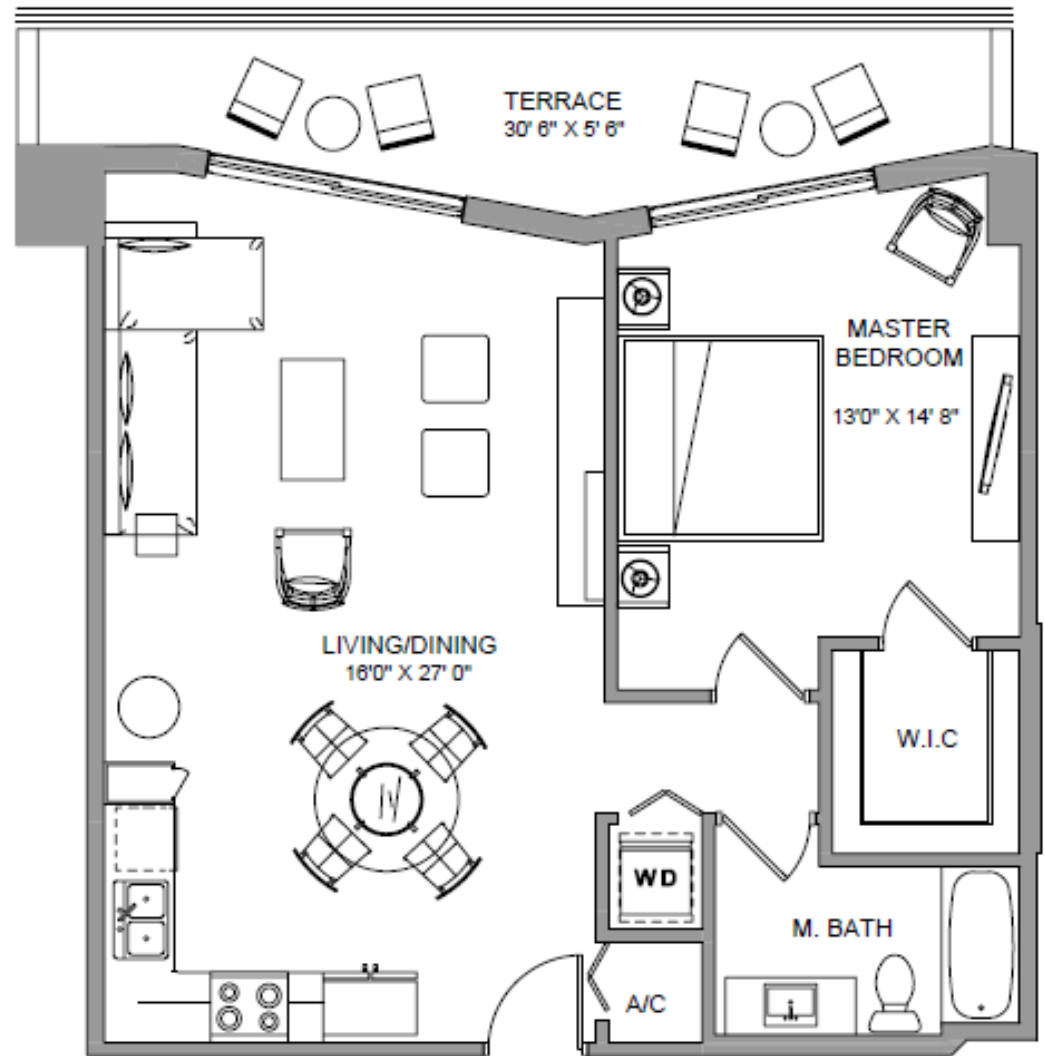
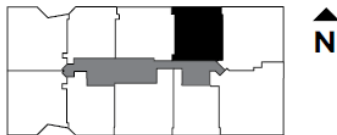
BRICKELLTEN

RESIDENCE FIVE

1 BEDROOM / 1 BATH

INTERIOR.....	827 FT ²	77 M ²
TERRACE.....	169 FT ²	16 M ²

TOTAL	996 FT²	93 M²
--------------	---------------------------	-------------------------



SALES AND MARKETING BY
ONEWORLD
PROPERTIES



These drawings are conceptual only and are for the convenience of reference. They should not be relied upon as representations, express or implied, of the final detail of the residences. Units shown are examples of unit types and may not depict actual units. Stated square footages are ranges for a particular unit type and are measured to the exterior boundaries of the exterior walls and the centerline of interior demising walls and in fact vary from the area that would be determined by using the description and definition of the "Unit" set forth in the Declaration (which generally only includes the interior airspace between the perimeter walls and excludes interior structural components).

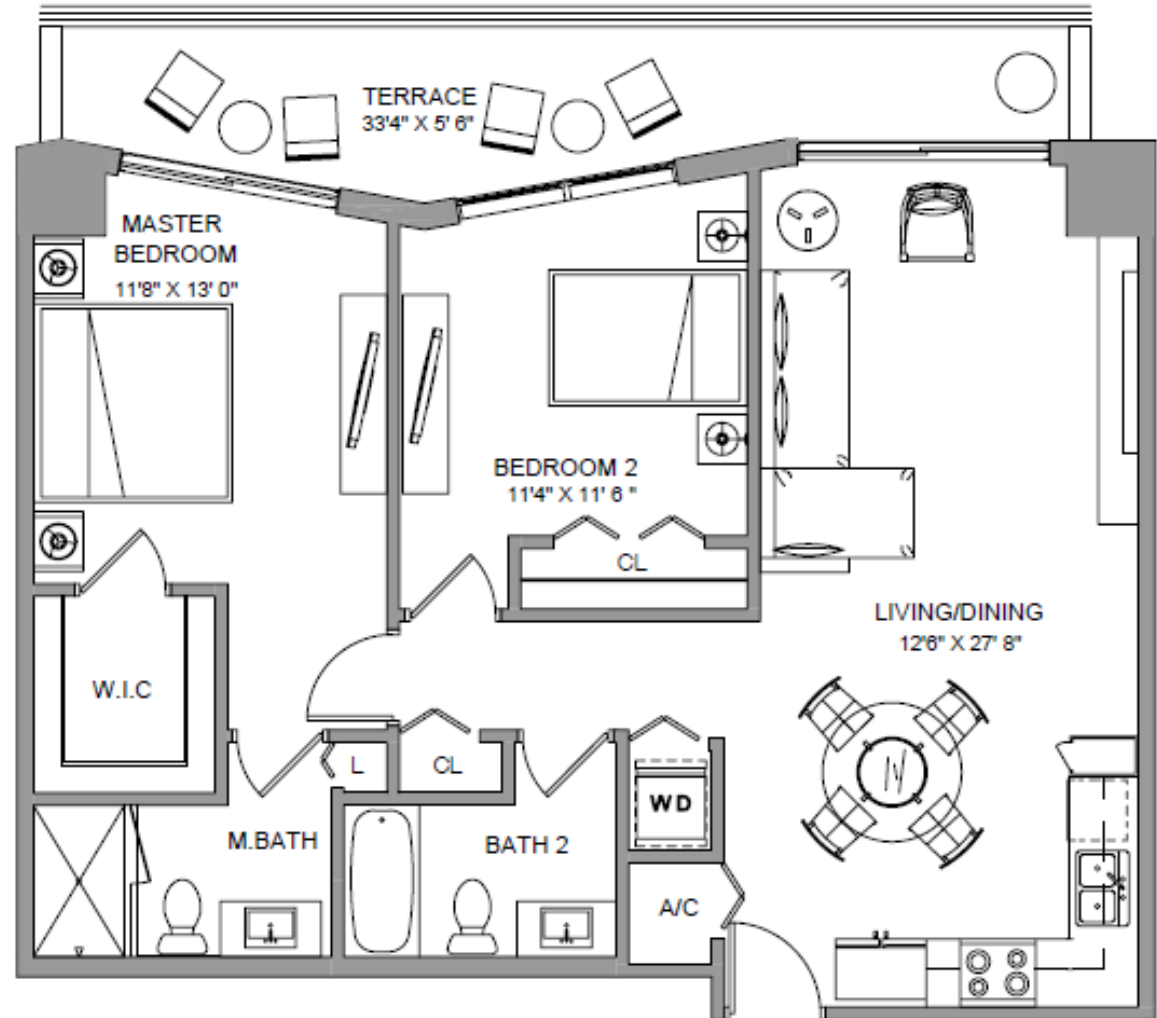
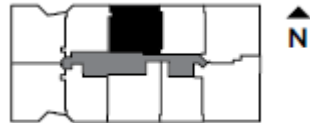
BRICKELLTEN

RESIDENCE SIX

2 BEDROOMS / 2 BATH

INTERIOR.....	1,009 FT ²	94 M ²
TERRACE.....	177 FT ²	16 M ²

TOTAL **1,186 FT²** **110 M²**



SALES AND MARKETING BY
ONEWORLD
PROPERTIES



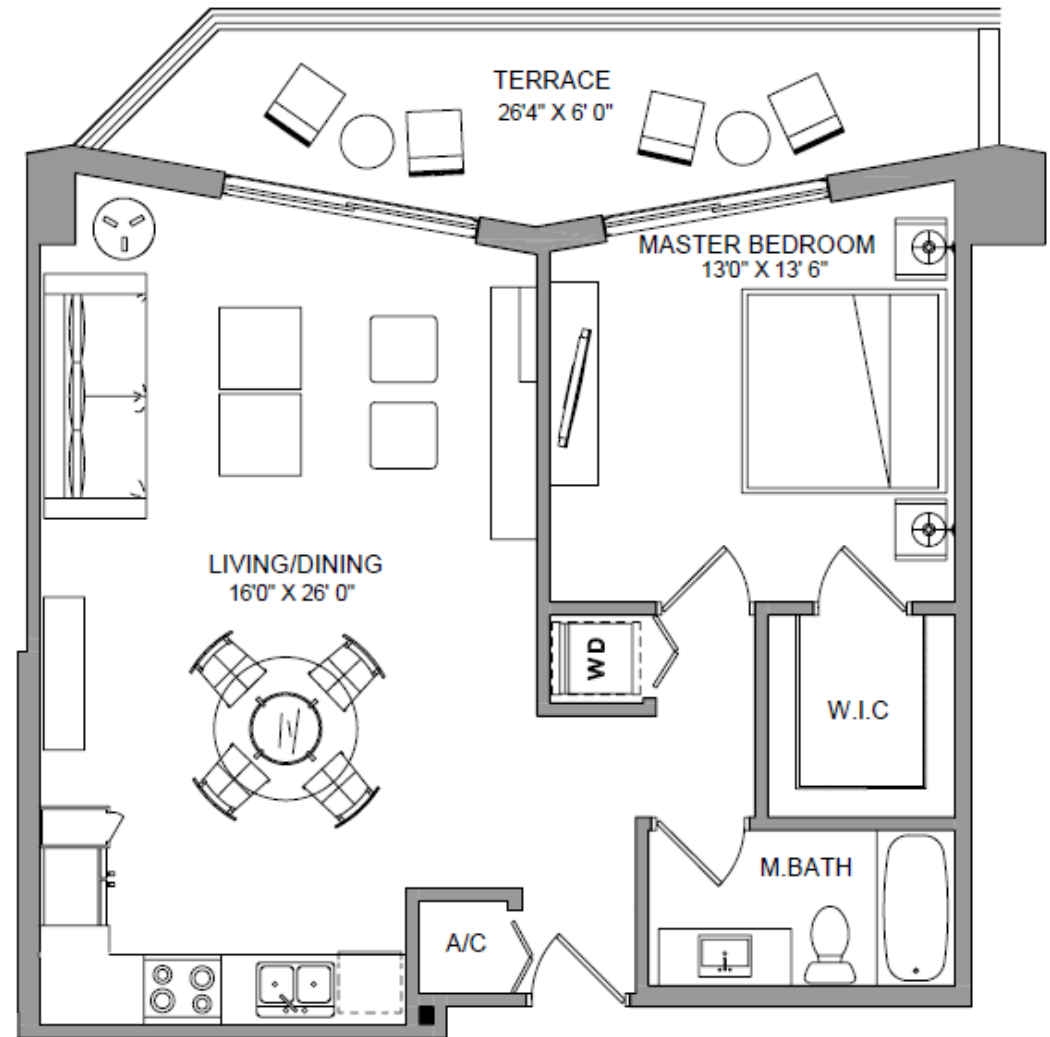
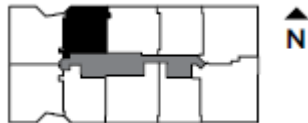
These drawings are conceptual only and are for the convenience of reference. They should not be relied upon as representations, express or implied, of the final detail of the residences. Units shown are examples of unit types and may not depict actual units. Stated square footages are ranges for a particular unit type and are measured to the exterior boundaries of the exterior walls and the centerline of interior demising walls and in fact vary from the area that would be determined by using the description and definition of the "Unit" set forth in the Declaration (which generally only includes the interior airspace between the perimeter walls and excludes interior structural components).

BRICKELL TEN

RESIDENCE SEVEN

1 BEDROOM / 1 BATH

INTERIOR.....	792 FT ²	74 M ²
TERRACE.....	167 FT ²	16 M ²
<hr/>		
TOTAL	959 FT²	90 M²



SALES AND MARKETING BY
ONEWORLD
PROPERTIES



These drawings are conceptual only and are for the convenience of reference. They should not be relied upon as representations, express or implied, of the final detail of the residences. Units shown are examples of unit types and may not depict actual units. Stated square footages are ranges for a particular unit type and are measured to the exterior boundaries of the exterior walls and the centerline of interior demising walls and in fact vary from the area that would be determined by using the description and definition of the "Unit" set forth in the Declaration (which generally only includes the interior airspace between the perimeter walls and excludes interior structural components).

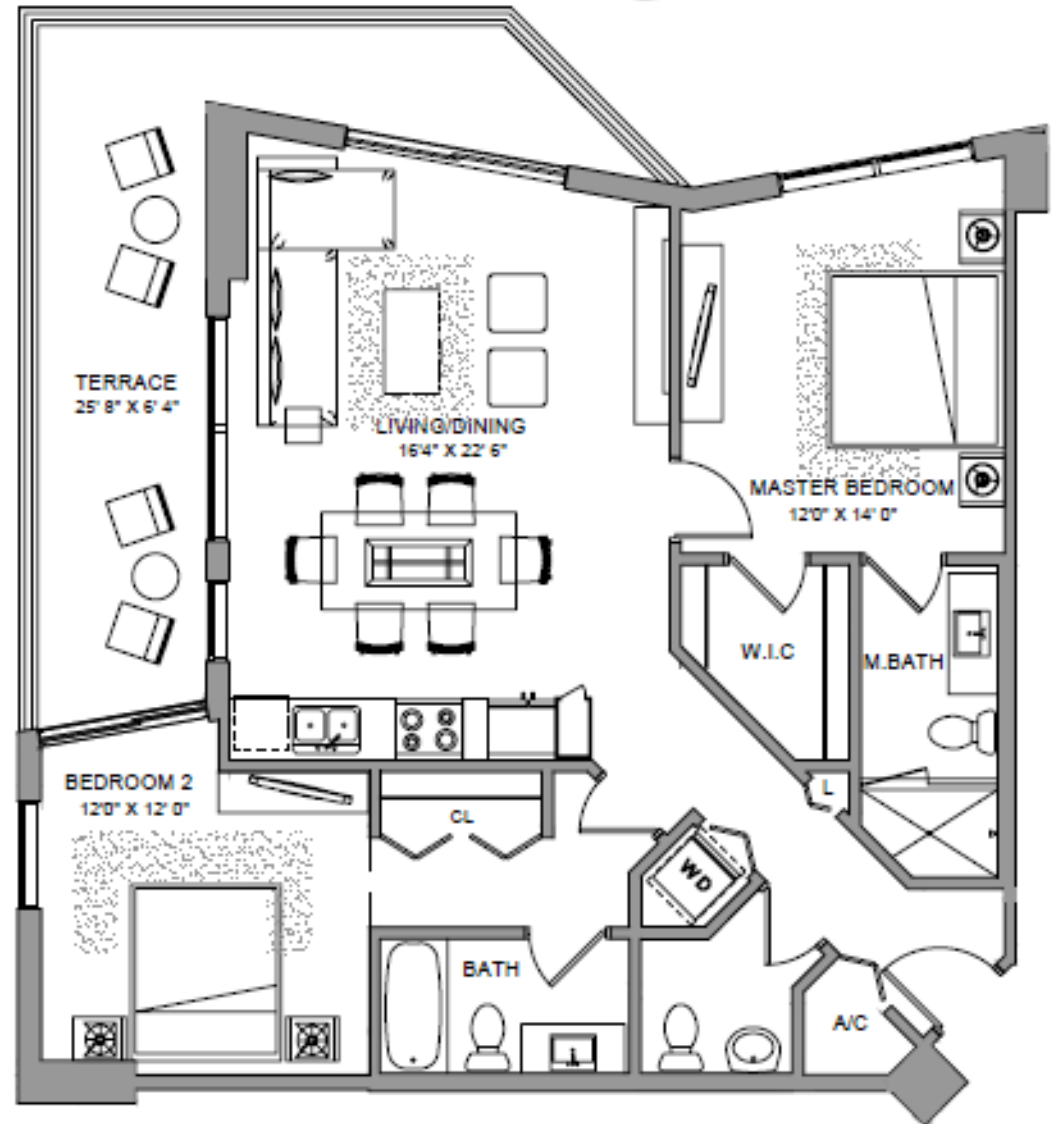
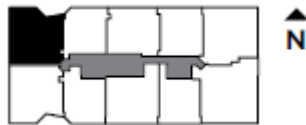
BRICKELLTEN

RESIDENCE EIGHT

2 BEDROOMS / 2 1/2 BATH

INTERIOR..... 1,111 FT² 103 M²
TERRACE..... 254 FT² 24 M²

TOTAL..... **1,365 FT²** **127 M²**



SALES AND MARKETING BY
ONEWORLD
PROPERTIES



These drawings are conceptual only and are for the convenience of reference. They should not be relied upon as representations, express or implied, of the final detail of the residences. Units shown are examples of unit types and may not depict actual units. Stated square footages are ranges for a particular unit type and are measured to the exterior boundaries of the exterior walls and the centerline of interior demising walls and in fact vary from the area that would be determined by using the description and definition of the "Unit" set forth in the Declaration (which generally only includes the interior airspace between the perimeter walls and excludes interior structural components).

BRICKELLTEN

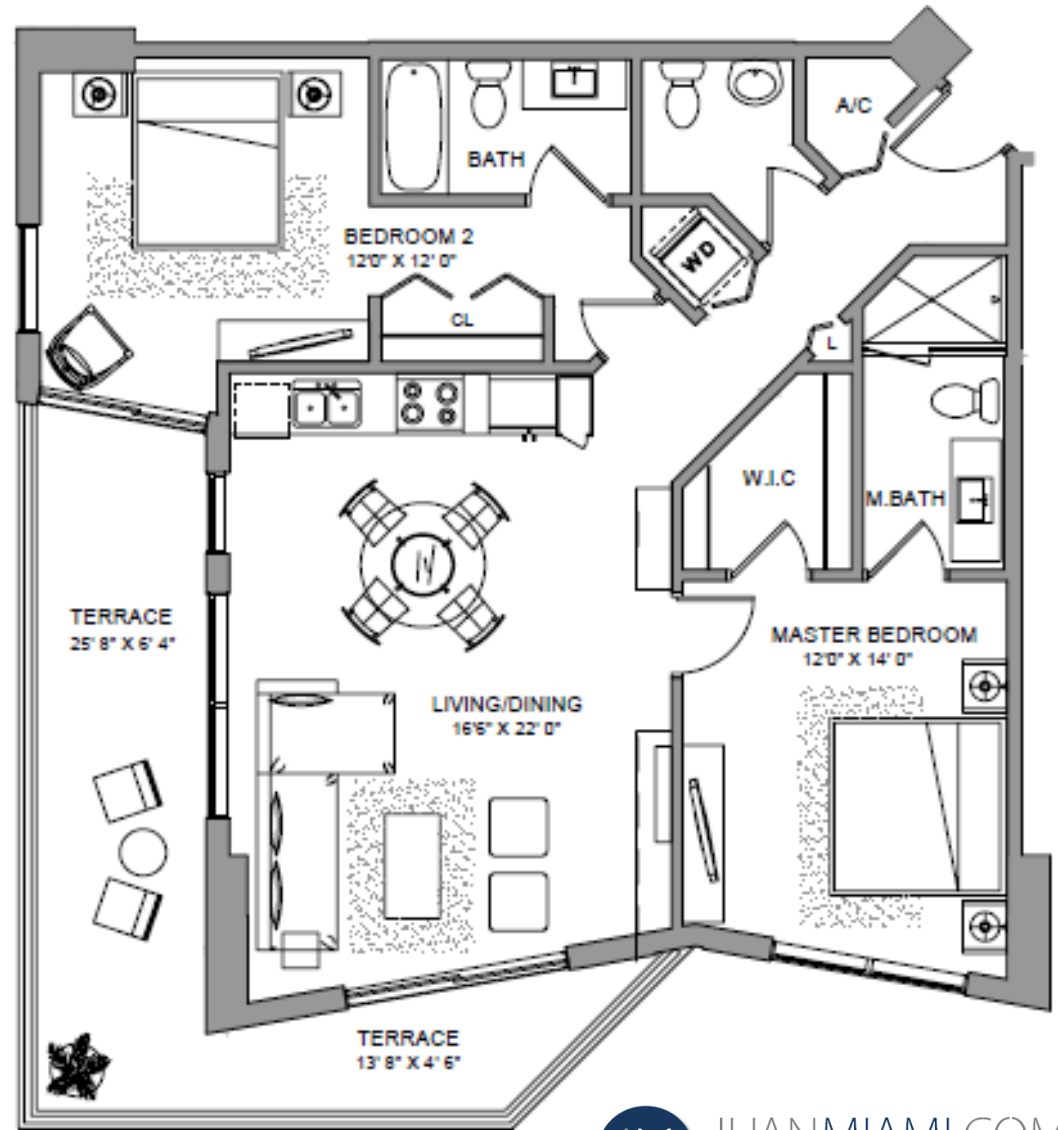
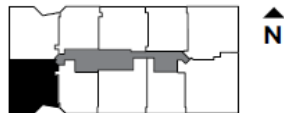
RESIDENCE NINE

2 BEDROOMS / 2 1/2 BATH

INTERIOR..... 1,116 FT² 104 M²

TERRACE..... 254 FT² 24 M²

TOTAL 1,370 FT² 128 M²



SALES AND MARKETING BY
ONEWORLD
PROPERTIES

JM **JUANMIAMI.COM**
FLORIDA REAL ESTATE



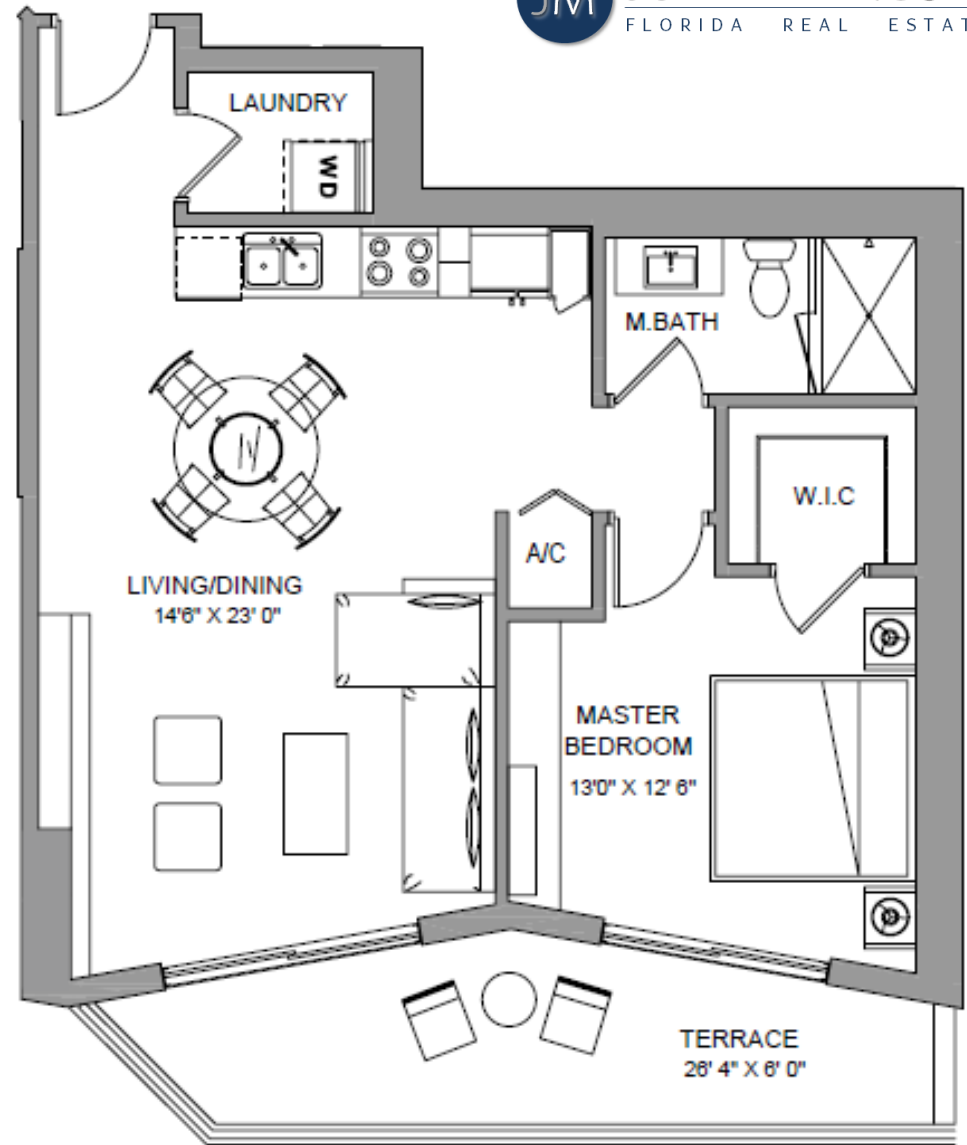
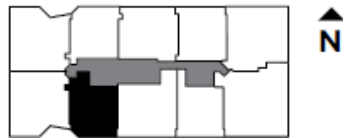
These drawings are conceptual only and are for the convenience of reference. They should not be relied upon as representations, express or implied, of the final detail of the residences. Units shown are examples of unit types and may not depict actual units. Stated square footages are ranges for a particular unit type and are measured to the exterior boundaries of the exterior walls and the centerline of interior demising walls and in fact vary from the area that would be determined by using the description and definition of the "Unit" set forth in the Declaration (which generally only includes the interior airspace between the perimeter walls and excludes interior structural components).

BRICKELL TEN

RESIDENCE TEN 1 BEDROOM / 1 BATH

INTERIOR..... 768 FT² 71 M²
TERRACE..... 150 FT² 14 M²

TOTAL 918 FT² 85 M²



SALES AND MARKETING BY
ONEWORLD
PROPERTIES



These drawings are conceptual only and are for the convenience of reference. They should not be relied upon as representations, express or implied, of the final detail of the residences. Units shown are examples of unit types and may not depict actual units. Stated square footages are ranges for a particular unit type and are measured to the exterior boundaries of the exterior walls and the centerline of interior demising walls and in fact vary from the area that would be determined by using the description and definition of the "Unit" set forth in the Declaration (which generally only includes the interior airspace between the perimeter walls and excludes interior structural components).

BRICKELL TEN

Juan G. Ramirez, P.A.

Real Estate & Business Consultant, e-PRO, TRC

Pre-Construction Specialist

La Rosa Realty, LLC

www.JuanMiami.com

Miami – Broward - Florida

Direct: +1.786.253.7621

Email: info@JuanMiami.com



JUANMIAMI.COM
FLORIDA REAL ESTATE