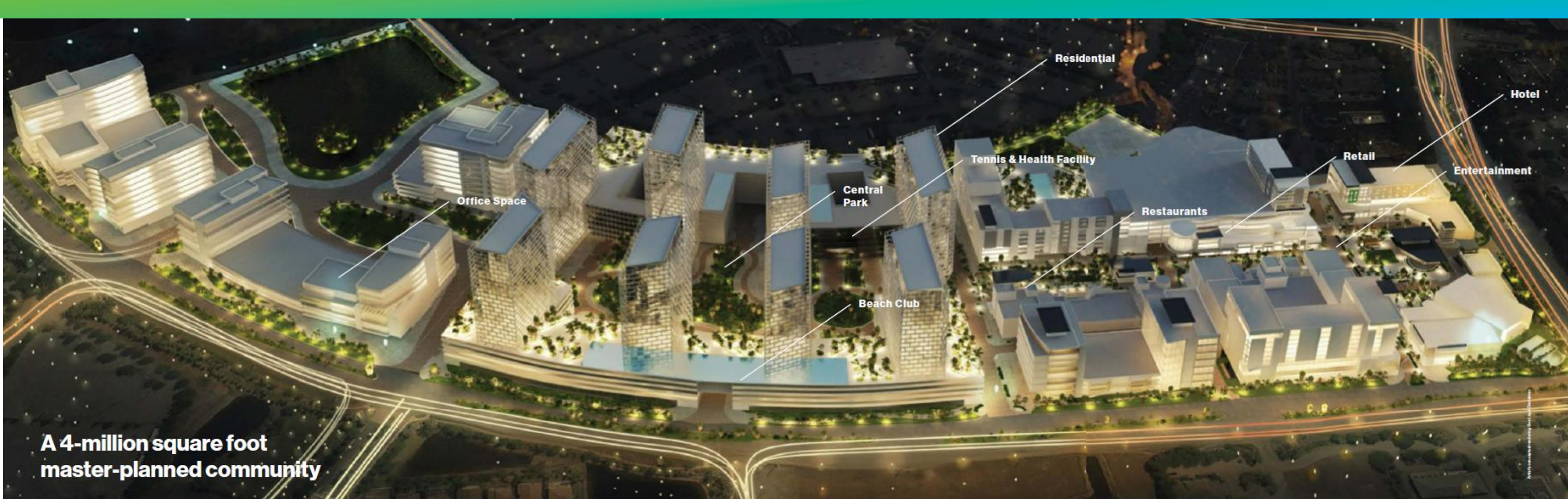


FLOOR PLANS



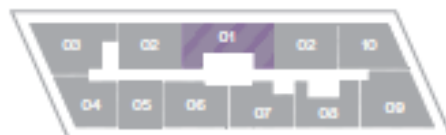
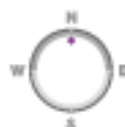
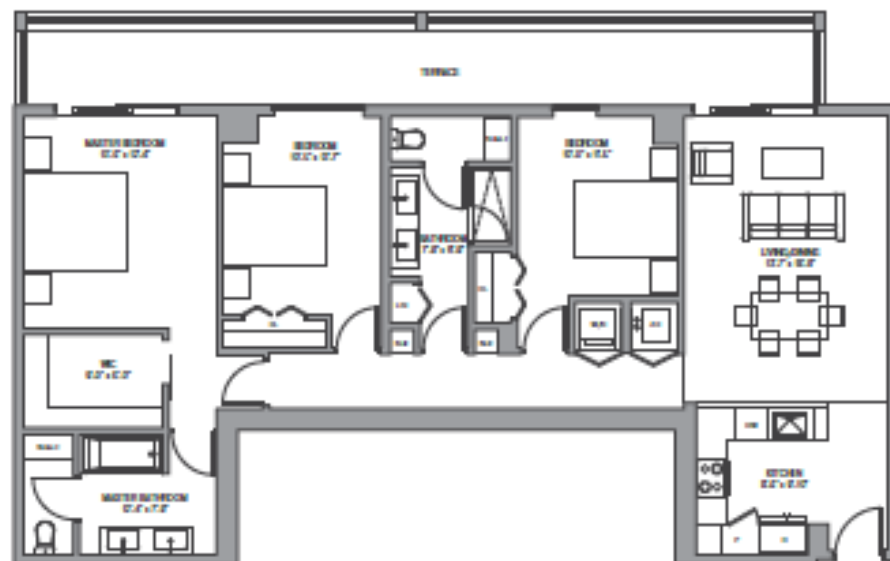
**A 4-million square foot
master-planned community**

Line 01

3 Bedrooms / 2 Baths

Floors: 8-26

| | | |
|--------------------|--------------------|-----------------|
| Residence Interior | 1,379 Sq Ft | 128 Sq M |
| Outdoor Living | 312 Sq Ft | 29 Sq M |
| Total: | 1,691 Sq Ft | 157 Sq M |

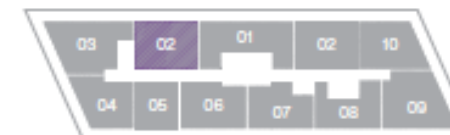
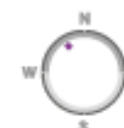
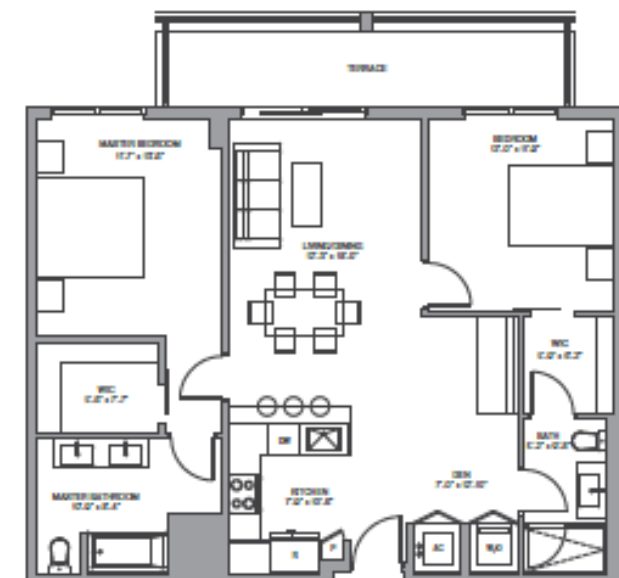


Line 02

2 Bedrooms / 2 Baths

Floors: 2-26

| | | |
|--------------------|--------------------|-----------------|
| Residence Interior | 1,118 Sq Ft | 104 Sq M |
| Outdoor Living | 158 Sq Ft | 15 Sq M |
| Total: | 1,276 Sq Ft | 119 Sq M |

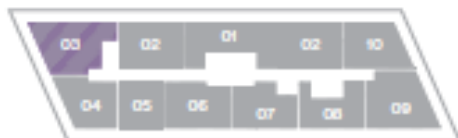
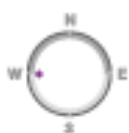


Line 03

2 Bedrooms / 2 Baths

Floors: 2-26

| | | |
|--------------------|--------------------|-----------------|
| Residence Interior | 1,306 Sq Ft | 121 Sq M |
| Outdoor Living | 430 Sq Ft | 40 Sq M |
| Total: | 1,736 Sq Ft | 161 Sq M |



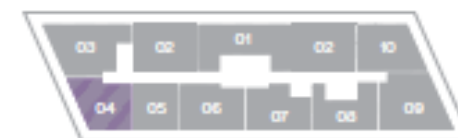
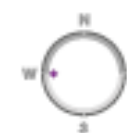
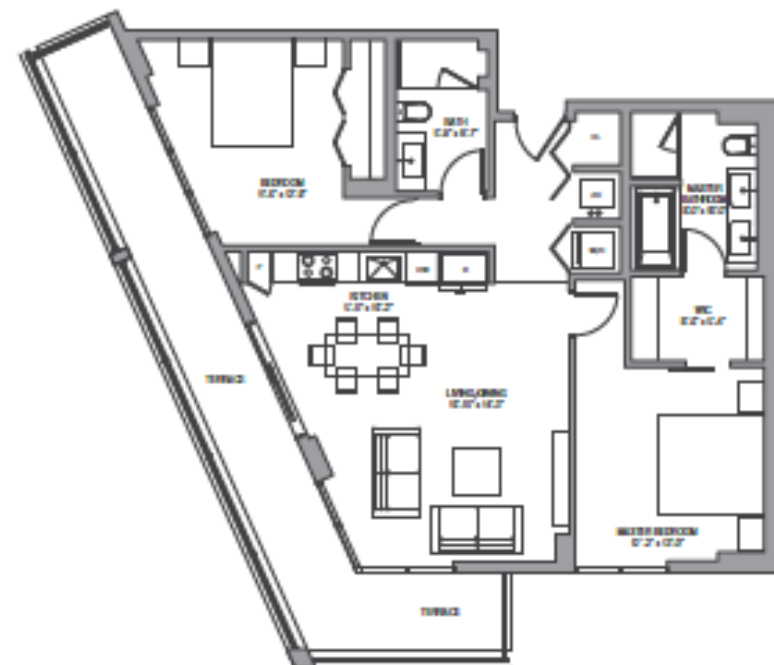
JUANMIAMI.COM
FLORIDA REAL ESTATE

Line 04

2 Bedrooms / 2 Baths

Floors: 2-26

| | | |
|--------------------|--------------------|-----------------|
| Residence Interior | 1,079 Sq Ft | 100 Sq M |
| Outdoor Living | 315 Sq Ft | 29 Sq M |
| Total: | 1,394 Sq Ft | 129 Sq M |

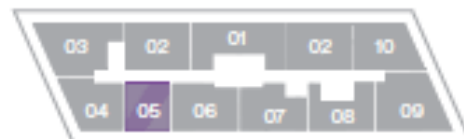
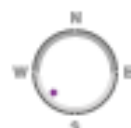
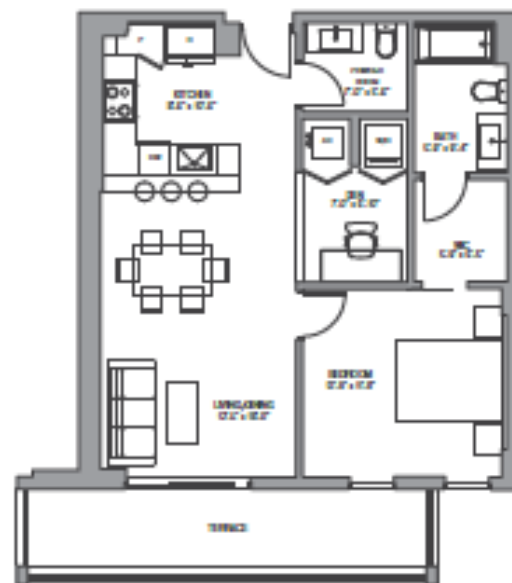


Line 05

1 Bedroom / 1 Bath

Floors: 2-26

| | | |
|--------------------|-----------------|---------------|
| Residence Interior | 780 Sq Ft | 72 SqM |
| Outdoor Living | 158 SqFt | 15 SqM |
| Total: | 938 SqFt | 87 SqM |



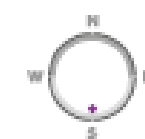
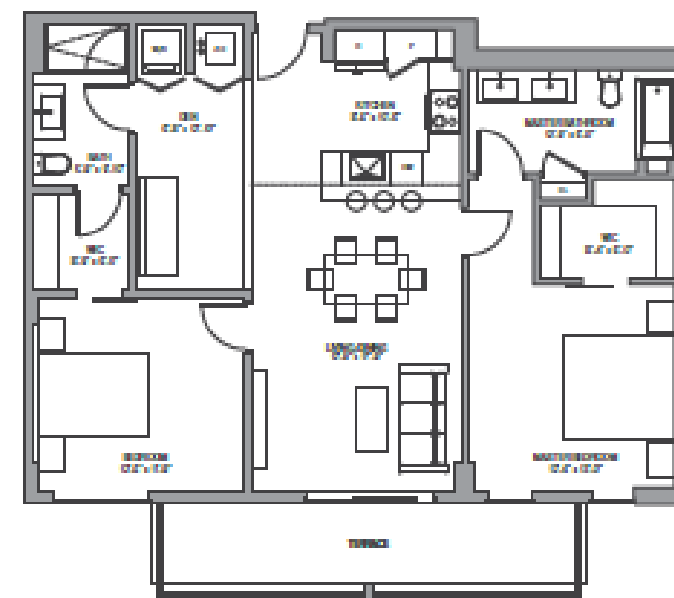
JUANMIAMI.COM
FLORIDA REAL ESTATE

Line 06

2 Bedrooms / 2 Baths

Floors: 2-26

| | | |
|--------------------|--------------------|-----------------|
| Residence Interior | 1,136 Sq Ft | 106 Sq M |
| Outdoor Living | 158 Sq Ft | 15 Sq M |
| Total: | 1,294 Sq Ft | 121 Sq M |

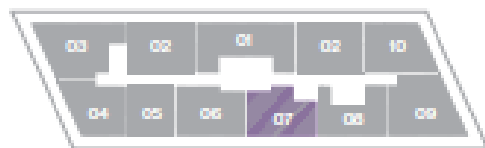
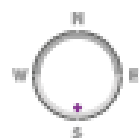
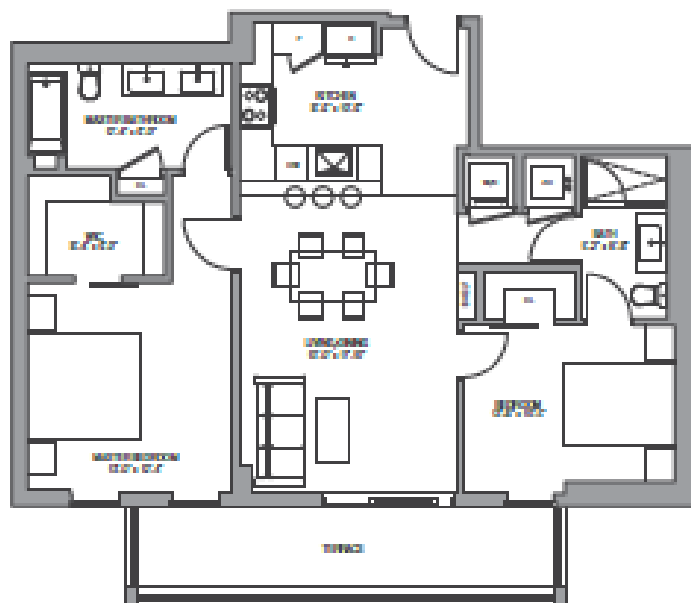


Line 07

2 Bedrooms / 2 Baths

Floors: 2-26

| | | |
|--------------------|--------------------|-----------------|
| Residence Interior | 1,031 Sq Ft | 96 Sq M |
| Outdoor Living | 158 Sq Ft | 15 Sq M |
| Total: | 1,189 Sq Ft | 111 Sq M |

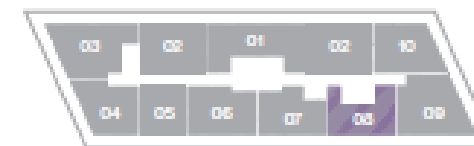
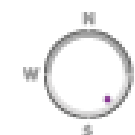
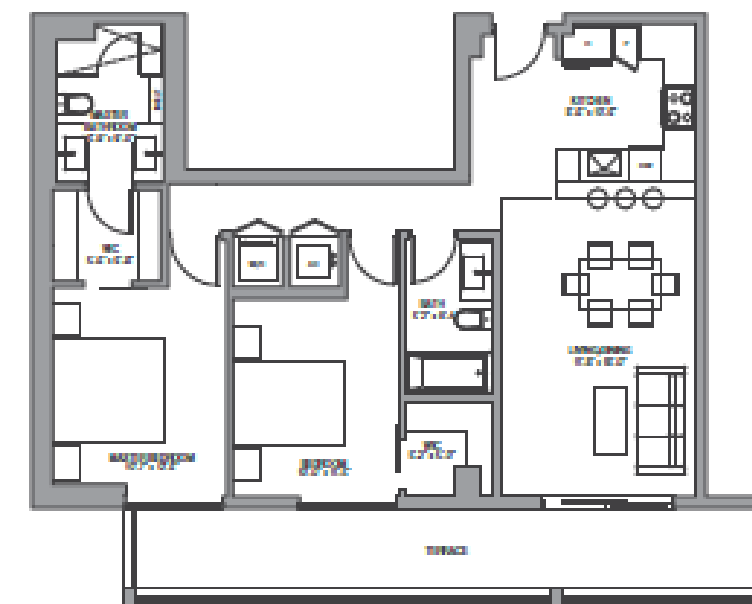


Line 08

2 Bedrooms / 2 Baths

Floors: 2-26

| | | |
|--------------------|--------------------|-----------------|
| Residence Interior | 976 Sq Ft | 91 Sq M |
| Outdoor Living | 235 Sq Ft | 22 Sq M |
| Total: | 1,211 Sq Ft | 113 Sq M |

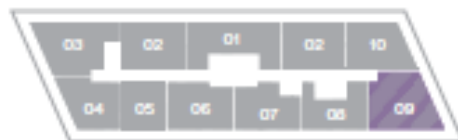
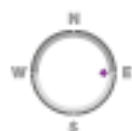
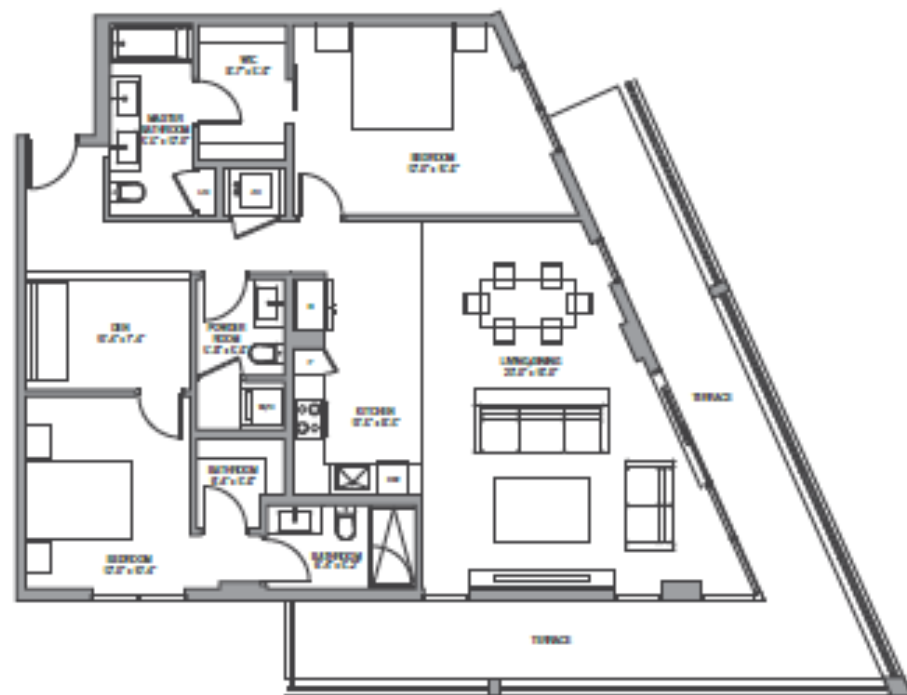


Line 09

2 Bedrooms / 2 Baths

Floors: 2-26

| | | |
|--------------------|--------------------|-----------------|
| Residence Interior | 1,367 Sq Ft | 127 Sq M |
| Outdoor Living | 436 Sq Ft | 41 Sq M |
| Total: | 1,803 Sq Ft | 168 Sq M |

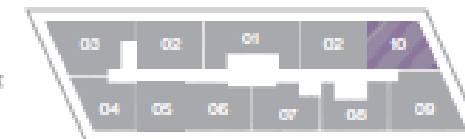
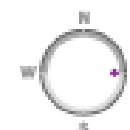
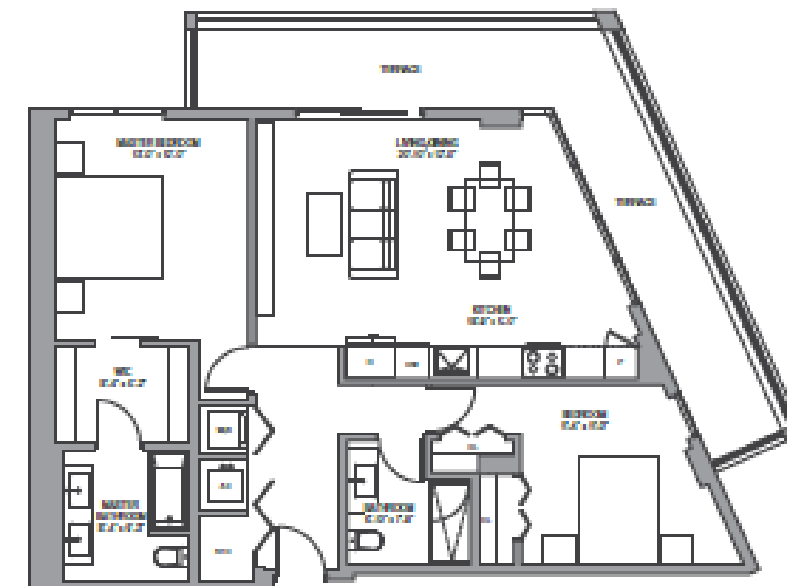


Line 10

2 Bedrooms / 2 Baths

Floors: 2-26

| | | |
|--------------------|--------------------|-----------------|
| Residence Interior | 1,067 Sq Ft | 102 Sq M |
| Outdoor Living | 306 Sq Ft | 28 Sq M |
| Total: | 1,373 Sq Ft | 130 Sq M |





More information, Private Tour & Sales

Juan G. Ramirez, P.A.

Real Estate & Business Consultant, e-PRO, TRC
Pre-Construction Specialist
La Rosa Realty, LLC

www.JuanMiami.com

Miami – Broward - Florida

Direct: +1.786.253.7621

Email: info@JuanMiami.com





We are pledged to the letter and spirit of U.S. policy for the achievement of equal housing throughout the Nation. We encourage and support an affirmative advertising, marketing and sales program in which there are no barriers to obtaining housing because of race, color, sex, religion, handicap, familial status or national origin.

Any stated square footages, dimensions and other measurements reflected herein are based on preliminary pre-construction plans, which are subject to change without notice and will vary with actual construction. Any stated square footages, dimensions and other measurements of units are measured to the exterior boundaries of the exterior walls and the centerline of interior demising walls between units and will vary from the dimensions of the unit that would be determined by using the description and definition of the "Unit" as set forth in the Declaration of Condominium (the "Declaration") for the Condominium (which generally only includes the interior airspace between the perimeter walls and excludes all interior structural components and other common elements). This method of measurement is generally used in sales materials and is provided to allow a prospective purchaser to compare the units in the Condominium with units in other condominium projects that utilize the same method. Terraces, patios and balconies are not part of the unit. Measurements and dimensions of rooms are generally taken at the farthest points of each given room (as if the room were a perfect rectangle), without regard for any cutouts, soffits or other variations. Accordingly, the square footage of the actual room will typically be smaller than the product obtained by multiplying the stated length and width. For the square footage of the units based on the definition of "Unit" in the Declaration, refer to Exhibit "2" to the Declaration included in the Condominium Documents.

Each purchaser is advised that there are various methods for calculating the square footage of a Unit, and that, depending on the method of calculation, the quoted square footage of a Unit in advertising materials may vary from the square footage quoted in the Prospectus and Declaration. The dimensions of the Unit shown in these floor plans have been calculated from the exterior boundaries of the exterior walls to the centerline of interior demising walls, including common elements such as structural walls and other interior structural components of the building, and in fact vary from the dimensions that would be determined by using the description and definition of the "Unit" set forth in the Prospectus and Declaration. The area of the Unit as defined in the Prospectus and Declaration is less than the square footage reflected here. Measurements of rooms set forth on this floor plan are generally taken at the greatest points (as if the room were a perfect rectangle), without regard for any cutouts, meaning the usable area of the actual room will typically be smaller than calculated by multiplying the length times width. All dimensions are approximate; may vary with actual construction; and are subject to development plans which may change. The furnishings and décor illustrated or depicted are not included with the purchase of the Unit. See Prospectus for information on what is offered with the Unit and the Unit square footage and dimensions.

Floor Plans

